

GENERAL NOTES:

- TKJ ENGINEERING, LLC. HAS NO CONTROL OF THE MANUFACTURING, PERFORMANCE, OR INSTALLATION OF THIS PRODUCT. THESE GENERIC PLANS WERE ENGINEERED IN ACCORDANCE WITH ACCEPTED ENGINEERING PRACTICES AND TEST DATA PROVIDED BY THE MANUFACTURER.
- THE WIND ABATEMENT SCREEN SYSTEM SHOWN ON THIS PRODUCT EVALUATION DOCUMENT HAS BEEN DESIGNED IN ACCORDANCE WITH THE 2007 FLORIDA BUILDING CODE. THIS WIND ABATEMENT SCREEN SYSTEM CAN BE INSTALLED IN HIGH VELOCITY HURRICANE ZONES (MIAMI-DADE COUNTY/BROWARD COUNTY). DESIGN WIND LOADS SHALL BE DETERMINED AS PER SECTION 1609 OF THE ABOVE REFERENCED CODE, IN ACCORDANCE WITH ASCE 7-05, AND FOR A BASIC WIND SPEED AS REQUIRED BY THE JURISDICTION WHERE THE WIND ABATEMENT SCREEN SYSTEM WILL BE INSTALLED. THE WIND ABATEMENT SCREEN SYSTEM ADEQUACY FOR IMPACT, DEFLECTION, AND FATIGUE RESISTANCE HAS BEEN VERIFIED IN ACCORDANCE WITH SECTION 1609.1.2 OF THE ABOVE REFERENCED CODE AND AS PER TAS 201, 202, AND 203 AT FENESTRATION TESTING LABORATORY, INC. PER THEIR REPORTS (SEE LIST OF REPORTS).
- LIMITATIONS OF USE:
 - THIS PRODUCT CAN BE USED IN HIGH VELOCITY HURRICANE ZONES.
 - MAXIMUM SIZE: 100 PSF MAX. PRESSURE @ 156" MAX. WIDTH
SEE TABLES ON SHEETS 5, 6, 7, 8, 10, 11, 14, 15, AND 16
 - MINIMUM SEPARATION TO GLAZING SHALL BE PER TABLE ON SHEET 2 FOR INSTALLATION IN HIGH VELOCITY HURRICANE ZONES.
 - IMPACT LEVEL D; 9-1/4 LB LARGE MISSILE IMPACT.
 - ANCHORING OR LOADING CONDITIONS OTHER THAN THOSE SHOWN IN THESE DETAILS ARE NOT PART OF THIS APPROVAL
 - THIS PRODUCT CAN BE USED AS A WINDBORNE DEBRIS SHUTTER PRODUCT.
 - INCREASE IN ALLOWABLE STRESS (1.33) HAS NOT BEEN INCORPORATED INTO THE DESIGN OF THIS PRODUCT.
- IT SHALL BE THE RESPONSIBILITY OF THE CONTRACTOR TO VERIFY THAT THE EXISTING STRUCTURE IS DESIGNED TO SUPPORT THE MINIMUM LOADS SHOWN ON THE TABLES ON SHEET 2. EXISTING STRUCTURES NOT ABLE TO SUPPORT THESE LOADS SHALL BE EVALUATED AS A SITE SPECIFIC PROJECT. SEE NOTE 4 OF PRODUCT EVALUATION NOTES.
- ALL ALUMINUM EXTRUSION SHALL BE 6063-T6 ALLOY (UNLESS OTHERWISE NOTED).
- ALL SCREEN PANELS SHALL BE PERMANENTLY LABELED, IN A READILY VISIBLE LOCATION, WITH AT LEAST ONE LABEL STATING:
STORM SMART INDUSTRIES
6182 IDLEWILD STREET, FORT MYERS, FL 33966
FL PRODUCT APPROVAL NO. #
OPENING No. #
- FOR DETERMINING INTERNAL PRESSURE IN THE ABOVE REFERENCED CODES, THIS PRODUCT IS CLASSIFIED AS NON-POROUS, HAVING A POROSITY OF LESS THEN 10%, FOR THE CONDITIONS SHOWN IN THIS PRODUCT EVALUATION DOCUMENT. SCREEN PANELS MUST COMPLETELY COVER AN OPENING IN ALL DIRECTIONS.
- THE SLIDE SCREEN, GROMMET SCREEN, AND STRAP SCREENS SHALL BE STORED IN A DESIGNATED AND ACCESSIBLE AREA, DURING NORMAL WEATHER CONDITIONS

PRODUCT EVALUATION NOTES:

- THIS PRODUCT EVALUATION DOCUMENT (P.E.D.) PREPARED BY THIS ENGINEER IS GENERIC AND DOES NOT PROVIDE INFORMATION FOR A SITE SPECIFIC PROJECT; I.E. WHERE THE SITE CONDITIONS DEVIATE FROM THE P.E.D.
- CONTRACTOR SHALL BE RESPONSIBLE FOR THE SELECTION, PURCHASE, AND INSTALLATION OF THIS PRODUCT BASED ON THIS PRODUCT EVALUATION PROVIDED AND SHALL NOT DEVIATE FROM THE CONDITIONS DETAILED ON THIS DOCUMENT.
- THIS PRODUCT EVALUATION DOCUMENT WILL BE CONSIDERED INVALID IF ALTERED BY ANY MEANS.
- SITE SPECIFIC PROJECTS SHALL BE PREPARED BY A FLORIDA REGISTERED ENGINEER OR ARCHITECT WHICH WILL BECOME THE ENGINEER OF RECORD (E.O.R.) FOR THE PROJECT AND WHO WILL BE RESPONSIBLE FOR THE PROPER USE OF THE P.E.D. THE ENGINEER OF RECORD, ACTING AS A DELEGATED ENGINEER TO THE P.E.D. ENGINEER, SHALL SUBMIT SITE SPECIFIC DRAWINGS FOR REVIEW.

ANCHOR & FASTENING NOTES:

- ALL FASTENERS SHALL BE CORROSION RESISTANT COATED CARBON STEEL AS PER DIN 50018 OR STAINLESS STEEL 304 OR 316 SERIES WITH 50 KSI YIELD POINT AND 90 KSI ULTIMATE TENSILE STRENGTH.
- NO EMBEDMENT INTO NON-STRUCTURAL COMPONENTS SUCH AS, STUCCO, TILE, SIDING, ETC. SHALL BE CONSIDERED AS PART OF THE EMBEDMENT.
- THE ANCHOR SPACING AND DESIGN PRESSURES ARE VALID FOR EDGE DISTANCES AND MINIMUM EMBEDMENT ON SHEET 2. FOR EDGE DISTANCES LESS THAN SPECIFIED, THE SCREEN DESIGN PRESSURE SHALL BE REDUCED BY THE EDGE DISTANCE REDUCTION FACTORS SHOWN ON SHEET 2. THE EDGE DISTANCE SHALL NOT BE LESS THAN 1 1/2" IN CONCRETE OR CMU, 3/4" IN WOOD, OR MINIMUM SPECIFIED BY THE MANUFACTURER. THE MINIMUM EDGE DISTANCE FOR THE 1/4-14 DRIL-FLEX SCREW IS 1/2".

FABRIC SPECIFICATION:

FIBER CONTENT: 100% POLYPROPYLENE
 CONSTRUCTION: 3/4 BASKET-WEAVE, WARP - 60 ENDS PER INCH, WERE - 50 ENDS PER INCH
 FINISH: CALENDARED
 WEIGHT (ASTM D-3776): 7.6 -OZ/SQUARE YARD
 SELVAGE: HEAT CUT OR WOVEN
 TENSILE STRENGTH (GRAB METHOD, ASTM D - 4632): WARP - 540 lbs., WEFT - 425 lbs.
 BURST STRENGTH (ASTM D - 3786): 825 PSI
 TEAR STRENGTH (ASTM D - 4533): WARP - 200 lbs., WEFT - 170 lbs.
 ABRASION RESISTANCE (ASTM D - 4886): 95% STRENGTH RETAINED
 PUNCTURE STRENGTH (ASTM D - 4833): 190 lbs.
 AIR FLOW: 230 CFM
 UV RETENTION (ASTM D-G154): 90%

SEWING:

SLIDE SCREEN RAIL EDGES: 4 SINGLE ROWS OF STRAIGHT STITCH AT INTERVALS OF 1/4" USING A MINIMUM OF 138 DENIER POLYESTER THREAD (SEE STITCHING DETAIL BELOW)

OTHER SCREEN EDGES: 3 SINGLE ROWS OF STRAIGHT STITCH AT INTERVALS OF 1 1/2" USING A MINIMUM OF 138 DENIER POLYESTER THREAD (SEE STITCHING DETAIL BELOW)

EDGES:

3 1/2" QUAD FOLDED ALL AROUND THE PERIMETER WITH CONTINUOUS SEWING

GROMMETS:

#3 NICKEL PLATED BRASS GROMMETS PLACED AT 1 1/4" FROM THE EDGE OF SCREEN

STRAP:

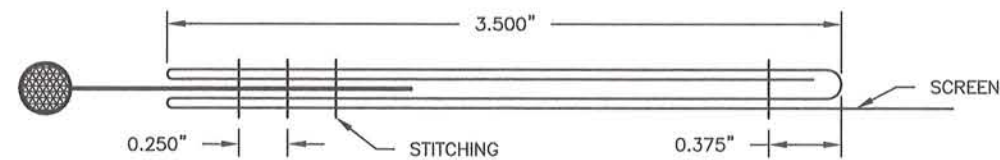
PATTERN: X100-1000
 WIDTH/DIAMETER: 1.875" +/- .063
 THICKNESS: .050" +/- .010
 AVERAGE BREAK STRENGTH: 5000 LB
 MATERIAL: POLYESTER

BUCKLE:

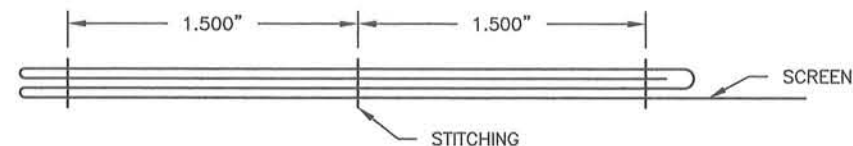
PATTERN: SPIKE TEETH GRIP
 WIDTH/DIAMETER: 2.5" +/- .10
 MATERIAL: ACETAL

BRACKET:

PATTERN: BENT PLATE
 DIMENSIONS: 4.0" X .75" X .10"
 HOLE SIZE: .31"Ø
 MATERIAL: 304 STAINLESS STEEL



STITCHING - DETAIL
SLIDE SCREEN RAIL EDGES - SCALE: 1:1



STITCHING - DETAIL
TYPICAL SCREEN EDGES - SCALE: 1:1

LIST OF REPORTS:

FENESTRATION TESTING LABORATORY, INC.
 LABORATORY No. 6026
 DATE: 9/10/2009
 PROJECT No. 09-1664
 FILE No. 09-665
 TEST PROTOCOL: TAS 201, 202, & 203
 MAXIMUM WIDTH TESTED: 159.75"
 DESIGN PRESSURE TESTED: 100 PSF
 STRUCTURAL LOAD TESTED: 150 PSF

REVISIONS	DATE	#

STORM SMART INDUSTRIES
 6182 IDLEWILD STREET, FORT MYERS, FL 33966
 PHONE: 239.938.1000; FAX: 239.278.7950
 WWW.STORMSMART.COM OR WWW.STORMCATCHER.COM

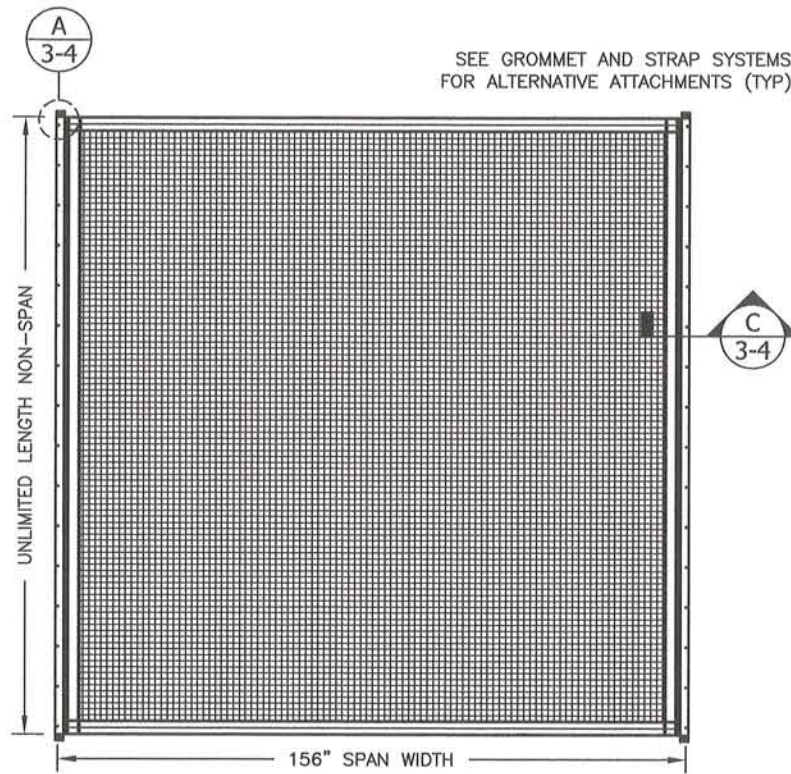
STORM CATCHER WIND ABATEMENT SYSTEM

TKJ Engineering, LLC.
 11835 AUTUMN CREEK DRIVE, RIVERVIEW, FL 33569
 PH: 813.404.7649; EML: TKJENGINEERING@VERIZON.NET
 CERTIFICATE OF AUTHORIZATION NUMBER: 28592

DATE:	11/2/09	DRAWN BY:	TKJ	SCALE:	N.T.S.	PROJ. #:	09-002.1
-------	---------	-----------	-----	--------	--------	----------	----------

THIS IS TO CERTIFY THAT, TO THE BEST OF MY KNOWLEDGE, THESE PLANS & SPECIFICATIONS ARE IN COMPLIANCE WITH THE BUILDING CODE REQUIREMENTS

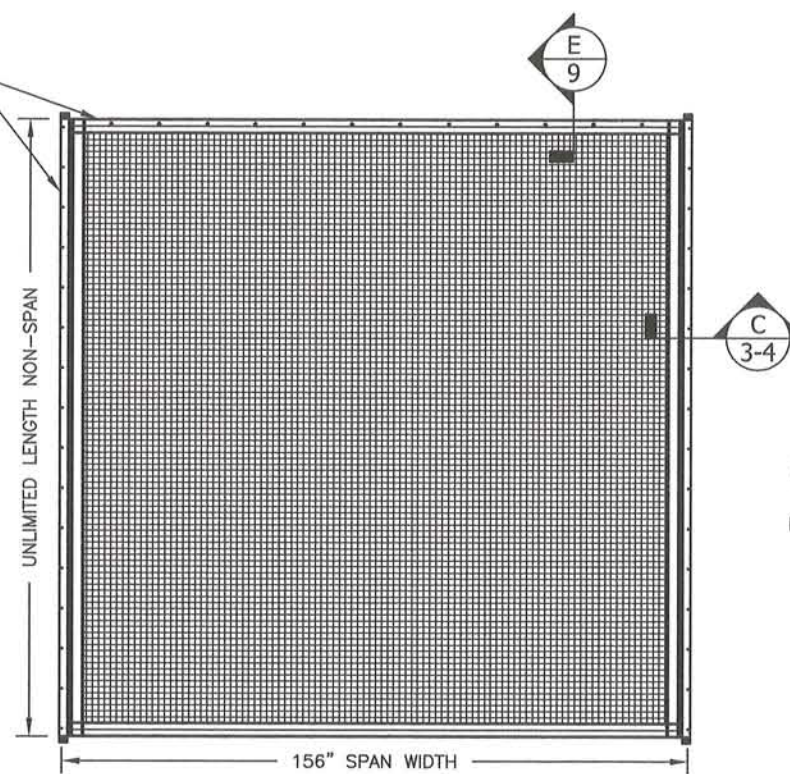
Trevor Johnson
 11-2-09
 TREVOR JOHNSON
 FLORIDA P.E. # 65624



SLIDE SCREEN SINGLE PANEL - ELEVATION

TYPICAL 2 SIDED ATTACHMENT - VERTICAL OR HORIZONTAL INSTALLATION - N.T.S.

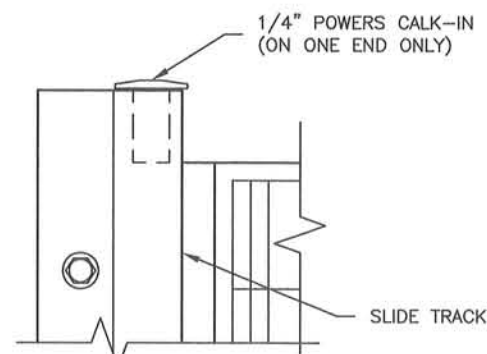
SEE GROMMET AND STRAP SYSTEMS FOR ALTERNATIVE ATTACHMENTS (TYP)



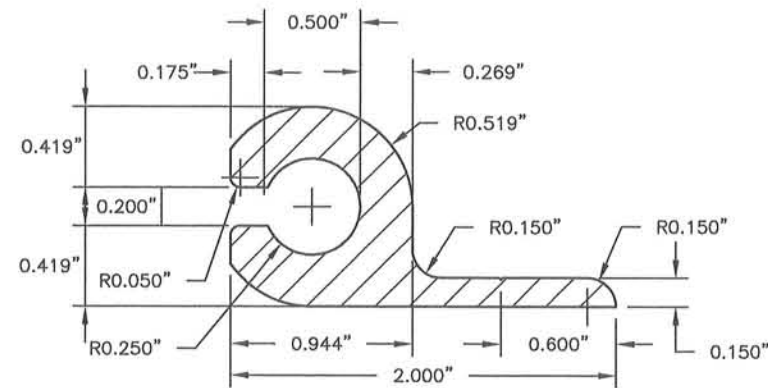
SLIDE SCREEN SINGLE PANEL - ELEVATION

3 OR 4 SIDED ATTACHMENT - VERTICAL OR HORIZONTAL INSTALLATION - SCALE N.T.S.

NOTE: FOR 4 SIDED ATTACHMENT THE SPAN IS IN THE SHORT DIMENSION BETWEEN FASTENERS.

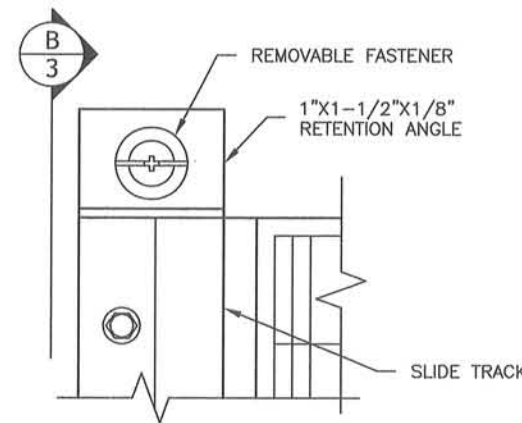


A RETENTION ANCHOR - DETAIL
SLIDE TRACK INSTALLATION (OPTION 2) - N.T.S.



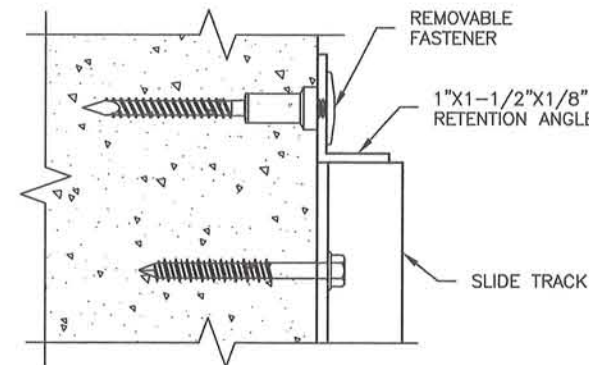
2" SLIDE RAIL TRACK

6063-T6 ALUMINUM - SCALE: 1:1

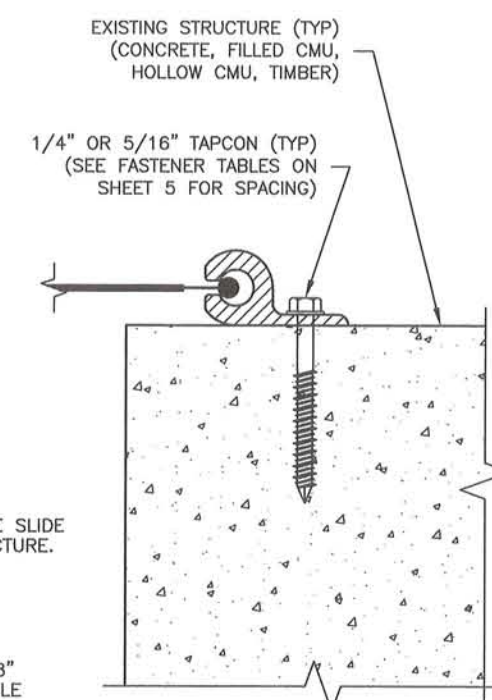


A RETENTION ANGLE - DETAIL
SLIDE TRACK INSTALLATION (OPTION 1) - N.T.S.

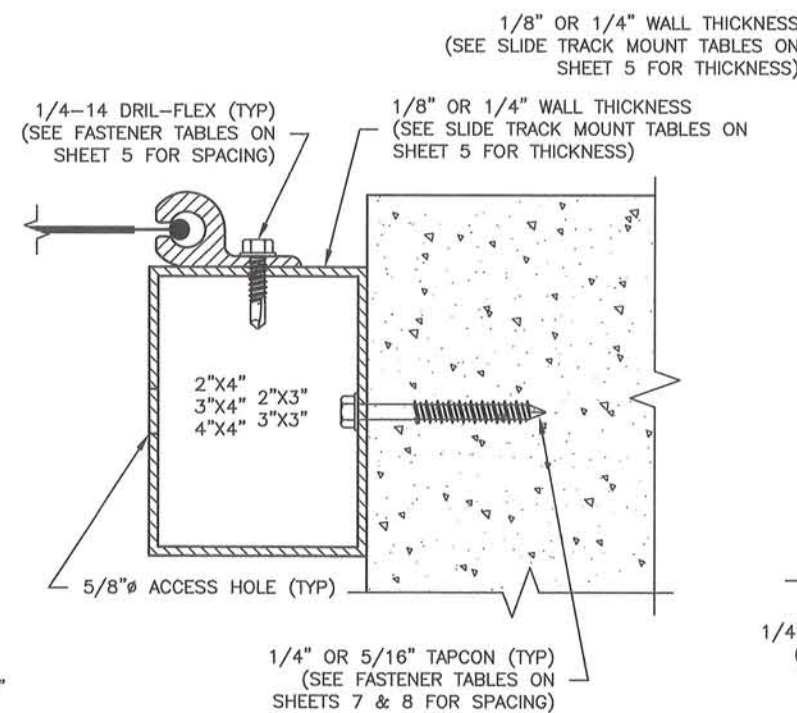
NOTE: THE RETENTION ANGLES ARE NOT REQUIRED WHERE THE SLIDE SCREEN TRACK ENDS ARE AGAINST THE EXISTING STRUCTURE.



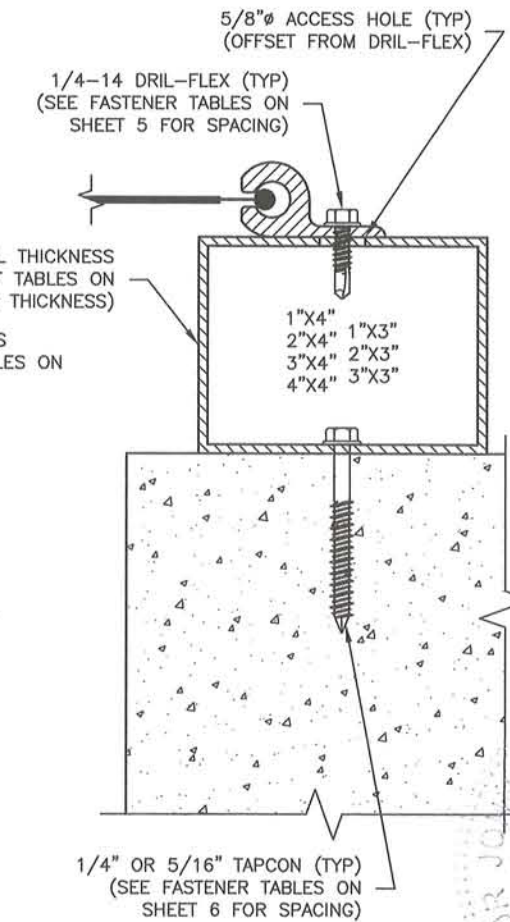
B RETENTION ANGLE - SECTION
SLIDE TRACK INSTALLATION - N.T.S.



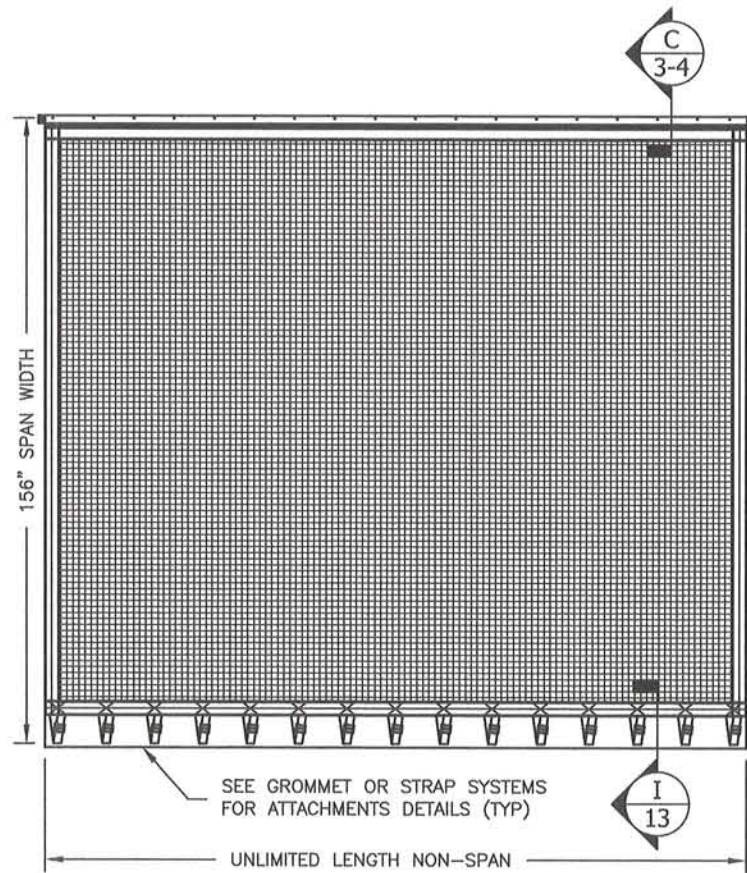
C WALL MOUNT - SECTION
TYPICAL SLIDE TRACK INSTALLATION (OPTION 1) - N.T.S.



C BUILD-IN MOUNT - SECTION
SLIDE TRACK INSTALLATION (OPTION 2) - N.T.S.



C BUILD-OUT MOUNT - SECTION
SLIDE TRACK INSTALLATION (OPTION 3) - N.T.S.



EASY SCREEN SINGLE PANEL - ELEVATION

TYPICAL 2 SIDED ATTACHMENT - VERTICAL OR HORIZONTAL INSTALLATION - N.T.S.

SEE GROMMET OR STRAP SYSTEMS FOR ATTACHMENTS DETAILS (TYP)

REVISIONS	#	DATE		

STORM SMART INDUSTRIES
6182 IDLEWILD STREET, FORT MYERS, FL 33966
PHONE: 239.638.1000; FAX: 239.278.7950
WWW.STORMSMART.COM OR WWW.STORMCATCHER.COM

STORM CATCHER WIND ABATEMENT SYSTEM

TKJ Engineering, LLC.
11835 AUTUMN CREEK DRIVE, RIVERVIEW, FL 33569
PH: 813.404.7649; EML: TKJENGINEERING@GMAIL.COM
CERTIFICATE OF AUTHORIZATION NUMBER: 28582

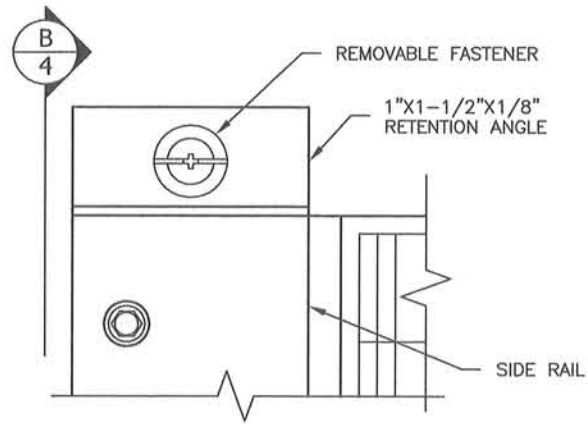
DATE: 11/2/09
DRAWN BY: TKJ
SCALE: N.T.S.
PROJ. #: 09-002.1

TREVOR JOHNSON
FLORIDA P.E. # 65624

THIS IS TO CERTIFY THAT TO THE BEST OF MY KNOWLEDGE, THESE PLANS & SPECIFICATIONS ARE IN COMPLIANCE WITH THE BUILDING CODE REQUIREMENTS

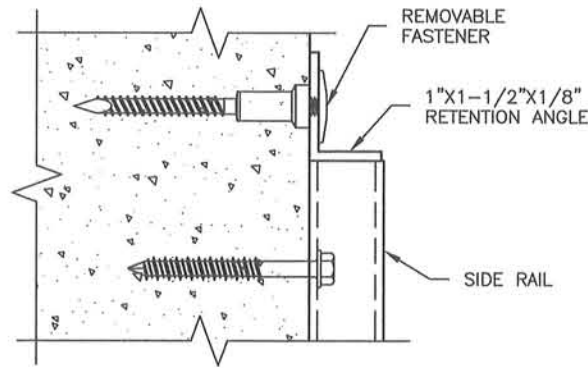
11-2-09

3 OF 16

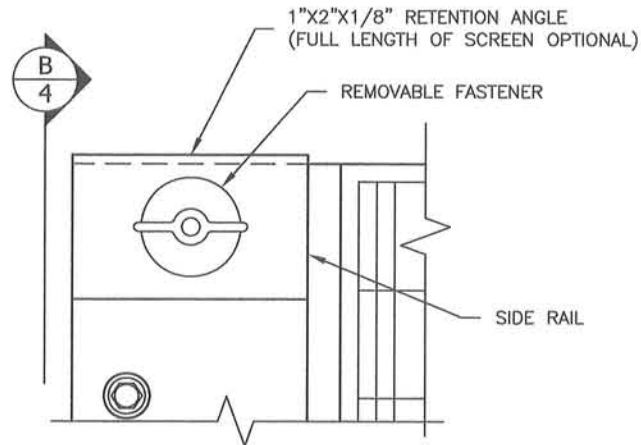


A RETENTION ANGLE - DETAIL
SIDE RAIL INSTALLATION (OPTION 1) - N.T.S.

NOTE: THE RETENTION ANGLES ARE NOT REQUIRED WHERE THE SLIDE SCREEN TRACK ENDS ARE AGAINST THE EXISTING STRUCTURE.

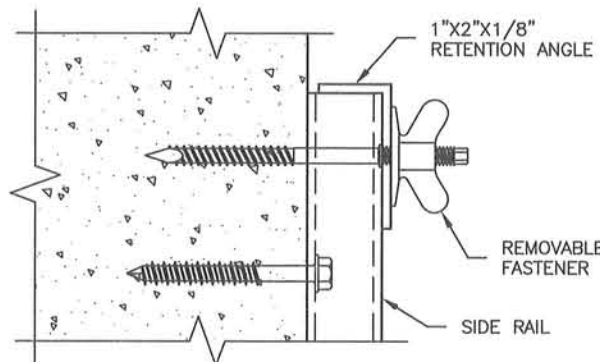


B RETENTION ANGLE - SECTION
SIDE RAIL INSTALLATION (OPTION 1) - N.T.S.

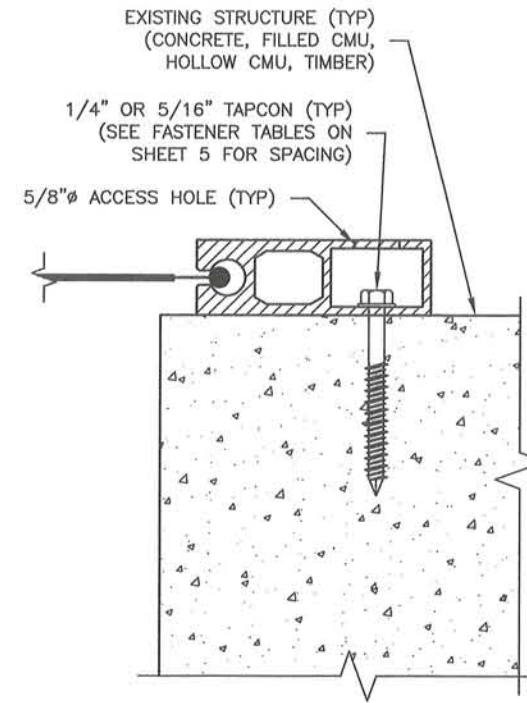


A RETENTION ANGLE - DETAIL
SIDE RAIL INSTALLATION (OPTION 2) - N.T.S.

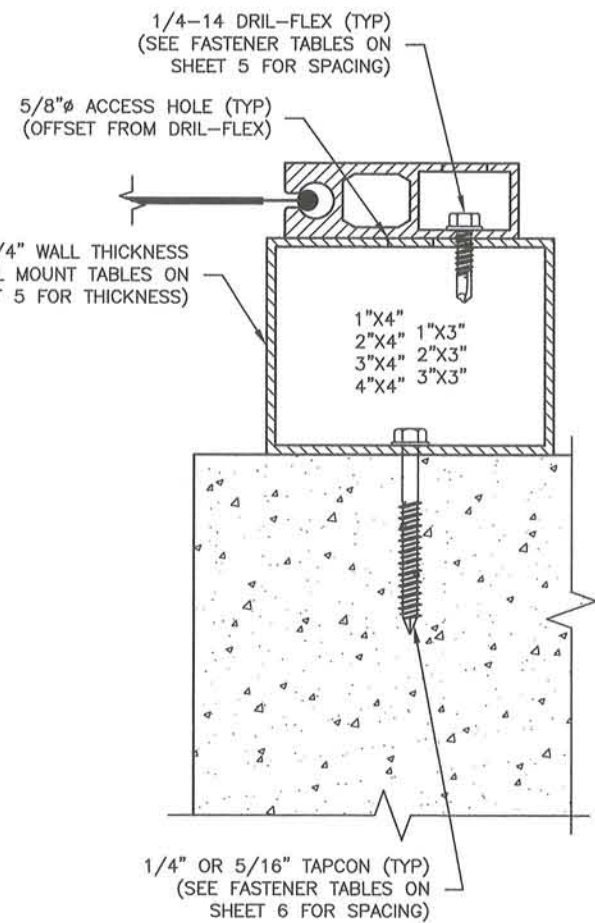
NOTE: THE RETENTION ANGLES ARE NOT REQUIRED WHERE THE SLIDE SCREEN TRACK ENDS ARE AGAINST THE EXISTING STRUCTURE.



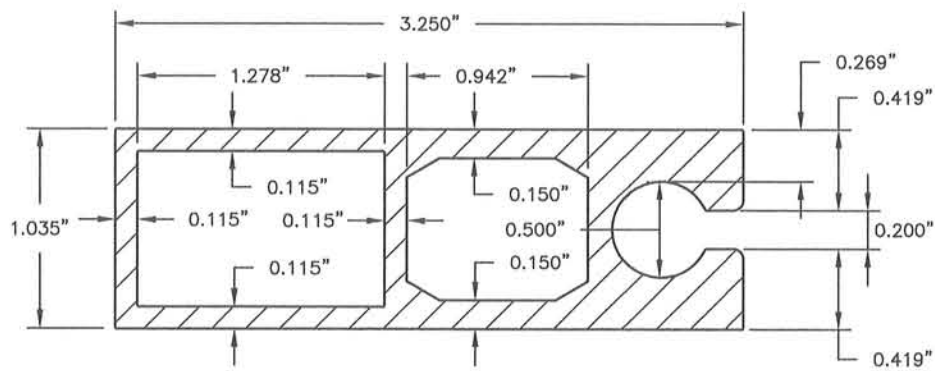
B RETENTION ANGLE - SECTION
SIDE RAIL INSTALLATION (OPTION 2) - N.T.S.



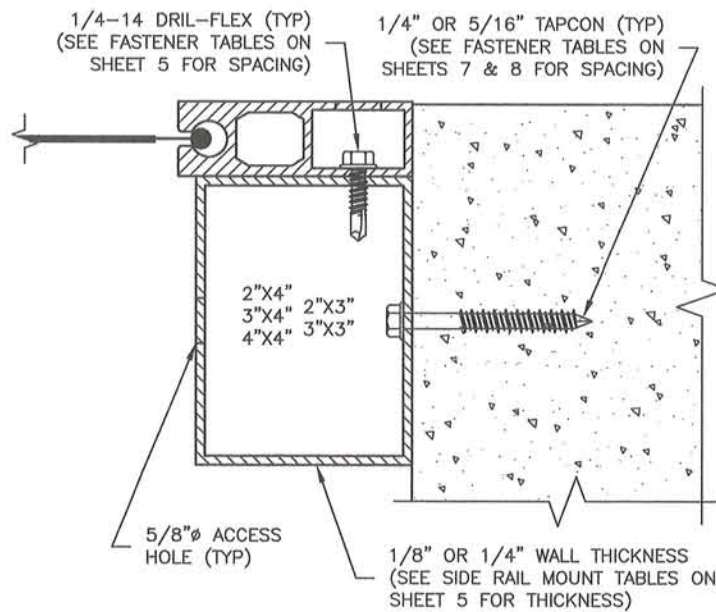
C WALL MOUNT - SECTION
TYPICAL SIDE RAIL INSTALLATION (OPTION 4) - N.T.S.



C BUILD-OUT MOUNT - SECTION
SIDE RAIL INSTALLATION (OPTION 6) - N.T.S.



3 1/4" SIDE RAIL TRACK
6063-T6 ALUMINUM - SCALE: 1:1



C BUILD-IN MOUNT - SECTION
SIDE RAIL INSTALLATION (OPTION 5) - N.T.S.

REVISIONS	DATE	#

STORM SMART INDUSTRIES
6182 IDELVILD STREET, FORT MYERS, FL 33966
PHONE: 239.938.1000; FAX: 239.278.7950
WWW.STORMSMART.COM OR WWW.STORMCATCHER.COM

STORM CATCHER WIND ABATEMENT SYSTEM

TKJ Engineering, LLC.
11835 AUTUMN CREEK DRIVE, RIVERVIEW, FL 33569
PH: 813.404.7649; EIL: TKJENGINEERING@VERIZON.NET
CERTIFICATE OF AUTHORIZATION NUMBER: 28562

DATE: 11/2/09
DRAWN BY: TKJ
SCALE: N.T.S.
PROJ. #: 09-002.1

THIS IS TO CERTIFY THAT, TO THE BEST OF MY KNOWLEDGE, THESE PLANS & SPECIFICATIONS ARE IN COMPLIANCE WITH THE BUILDING CODE REQUIREMENTS.

Trevor Johnson
11-2-09
TREVOR JOHNSON
FLORIDA P.E. # 65624

NOTE: LOADS AND FASTENING SCHEDULES ARE FOR ATTACHING THE SIDE RAILS AND SLIDE TRACKS TO THE EXISTING STRUCTURE AND TO ALUMINUM MEMBERS

SIDE RAIL MOUNT				
MAXIMUM DESIGN PRESSURE OF A SIDE RAIL SCREEN FOR ANY LENGTH ATTACHED WITH 5/16" ELCO ULTRACON HFH @ 12" O.C.				
SCREEN SPANS UP TO	CONC. & FILLED CMU (3500 PSI)	CONC. & FILLED CMU (2500 PSI)	HOLLOW CMU (1800 PSI)	TIMBER (S.G. = .55)
	PRESSURE (PSF)	PRESSURE (PSF)	PRESSURE (PSF)	PRESSURE (PSF)
4'-0"	100	100	48	91
4'-6"	100	100	42	79
5'-0"	100	96	38	70
5'-6"	95	86	34	62
6'-0"	86	77	31	56
6'-6"	79	70	28	51
7'-0"	73	65	26	47
7'-6"	66	60	24	43
8'-0"	62	56	22	39
8'-6"	58	52	21	37
9'-0"	54	49	19	35
9'-6"	51	46	18	32
10'-0"	48	43	17	30
10'-6"	46	41	16	28
11'-0"	44	39	16	27
11'-6"	41	37	14	26
12'-0"	39	36	14	24
12'-6"	38	34	13	23
13'-0"	36	32	13	22

SIDE RAIL MOUNT				
MAXIMUM DESIGN PRESSURE OF A SIDE RAIL SCREEN FOR ANY LENGTH ATTACHED WITH 5/16" ELCO ULTRACON HFH @ 6" O.C.				
SCREEN SPANS UP TO	CONC. & FILLED CMU (3500 PSI)	CONC. & FILLED CMU (2500 PSI)	HOLLOW CMU (1800 PSI)	TIMBER (S.G. = .55)
	PRESSURE (PSF)	PRESSURE (PSF)	PRESSURE (PSF)	PRESSURE (PSF)
4'-0"	100	100	100	100
4'-6"	100	100	91	100
5'-0"	100	100	81	100
5'-6"	100	100	72	100
6'-0"	100	100	66	100
6'-6"	100	100	60	100
7'-0"	100	100	55	100
7'-6"	100	100	51	95
8'-0"	100	100	48	89
8'-6"	100	100	45	83
9'-0"	100	100	42	77
9'-6"	100	100	39	72
10'-0"	100	94	37	68
10'-6"	99	90	35	64
11'-0"	94	85	34	61
11'-6"	89	80	32	57
12'-0"	86	77	30	55
12'-6"	81	74	29	53
13'-0"	78	70	28	50

SIDE RAIL MOUNT				
MAXIMUM DESIGN PRESSURE OF A SIDE RAIL SCREEN FOR ANY LENGTH ATTACHED WITH 5/16" ELCO ULTRACON HFH @ 4" O.C.				
SCREEN SPANS UP TO	CONC. & FILLED CMU (3500 PSI)	CONC. & FILLED CMU (2500 PSI)	HOLLOW CMU (1800 PSI)	TIMBER (S.G. = .55)
	PRESSURE (PSF)	PRESSURE (PSF)	PRESSURE (PSF)	PRESSURE (PSF)
4'-0"	100	100	100	100
4'-6"	100	100	100	100
5'-0"	100	100	100	100
5'-6"	100	100	100	100
6'-0"	100	100	100	100
6'-6"	100	100	94	100
7'-0"	100	100	87	100
7'-6"	100	100	80	100
8'-0"	100	100	75	100
8'-6"	100	100	70	100
9'-0"	100	100	65	100
9'-6"	100	100	62	100
10'-0"	100	100	58	100
10'-6"	100	100	55	100
11'-0"	100	100	52	98
11'-6"	100	100	50	93
12'-0"	100	100	48	88
12'-6"	100	100	46	83
13'-0"	100	100	44	80

SIDE RAIL MOUNT				
MAXIMUM DESIGN PRESSURE OF A SIDE RAIL SCREEN FOR ANY LENGTH ATTACHED WITH 1/4"-14 ELCO DRIL-FLEX HWH TO ALUMINUM OR STEEL				
SCREEN SPANS UP TO	@ 6" O.C. 1/8" AL/ST	@ 6" O.C. 1/4" AL/ST	@ 4" O.C. 1/8" AL/ST	@ 4" O.C. 1/4" AL/ST
	PRESSURE (PSF)	PRESSURE (PSF)	PRESSURE (PSF)	PRESSURE (PSF)
4'-0"	100	100	100	100
4'-6"	100	100	100	100
5'-0"	100	100	100	100
5'-6"	94	100	100	100
6'-0"	86	100	100	100
6'-6"	79	100	100	100
7'-0"	73	100	100	100
7'-6"	68	100	100	100
8'-0"	63	100	98	100
8'-6"	59	100	91	100
9'-0"	56	100	86	100
9'-6"	52	100	81	100
10'-0"	50	100	77	100
10'-6"	47	100	73	100
11'-0"	45	98	69	100
11'-6"	42	93	66	100
12'-0"	40	88	63	100
12'-6"	39	83	60	100
13'-0"	37	81	57	100

NOTE: USE THIS TABLE TO DETERMINE THE MINIMUM WALL THICKNESS FOR THE MEMBER THE SIDE RAIL IS ATTACHED

SLIDE TRACK MOUNT				
MAXIMUM DESIGN PRESSURE OF A SLIDE TRACK SCREEN FOR ANY LENGTH ATTACHED WITH 5/16" ELCO ULTRACON HFH @ 12" O.C.				
SCREEN SPANS UP TO	CONC. & FILLED CMU (3500 PSI)	CONC. & FILLED CMU (2500 PSI)	HOLLOW CMU (1800 PSI)	TIMBER (S.G. = .55)
	PRESSURE (PSF)	PRESSURE (PSF)	PRESSURE (PSF)	PRESSURE (PSF)
4'-0"	100	100	100	100
4'-6"	100	100	87	100
5'-0"	100	100	77	100
5'-6"	100	100	68	100
6'-0"	100	100	60	91
6'-6"	100	100	54	82
7'-0"	100	100	49	74
7'-6"	100	100	45	67
8'-0"	100	100	41	62
8'-6"	100	100	38	56
9'-0"	100	93	35	52
9'-6"	98	87	33	48
10'-0"	92	82	31	45
10'-6"	86	76	29	42
11'-0"	80	72	27	40
11'-6"	76	68	26	37
12'-0"	72	64	24	35
12'-6"	68	60	23	33
13'-0"	64	57	22	31

SLIDE TRACK MOUNT				
MAXIMUM DESIGN PRESSURE OF A SLIDE TRACK SCREEN FOR ANY LENGTH ATTACHED WITH 5/16" ELCO ULTRACON HFH @ 6" O.C.				
SCREEN SPANS UP TO	CONC. & FILLED CMU (3500 PSI)	CONC. & FILLED CMU (2500 PSI)	HOLLOW CMU (1800 PSI)	TIMBER (S.G. = .55)
	PRESSURE (PSF)	PRESSURE (PSF)	PRESSURE (PSF)	PRESSURE (PSF)
4'-0"	100	100	100	100
4'-6"	100	100	100	100
5'-0"	100	100	100	100
5'-6"	100	100	100	100
6'-0"	100	100	100	100
6'-6"	100	100	100	100
7'-0"	100	100	100	100
7'-6"	100	100	100	100
8'-0"	100	100	99	100
8'-6"	100	100	92	100
9'-0"	100	100	85	100
9'-6"	100	100	79	100
10'-0"	100	100	75	100
10'-6"	100	100	70	100
11'-0"	100	100	66	100
11'-6"	100	100	61	94
12'-0"	100	100	59	89
12'-6"	100	100	55	83
13'-0"	100	100	53	79

SLIDE TRACK MOUNT				
MAXIMUM DESIGN PRESSURE OF A SLIDE TRACK SCREEN FOR ANY LENGTH ATTACHED WITH 5/16" ELCO ULTRACON HFH @ 4" O.C.				
SCREEN SPANS UP TO	CONC. & FILLED CMU (3500 PSI)	CONC. & FILLED CMU (2500 PSI)	HOLLOW CMU (1800 PSI)	TIMBER (S.G. = .55)
	PRESSURE (PSF)	PRESSURE (PSF)	PRESSURE (PSF)	PRESSURE (PSF)
4'-0"	100	100	100	100
4'-6"	100	100	100	100
5'-0"	100	100	100	100
5'-6"	100	100	100	100
6'-0"	100	100	100	100
6'-6"	100	100	100	100
7'-0"	100	100	100	100
7'-6"	100	100	100	100
8'-0"	100	100	100	100
8'-6"	100	100	100	100
9'-0"	100	100	100	100
9'-6"	100	100	100	100
10'-0"	100	100	100	100
10'-6"	100	100	100	100
11'-0"	100	100	100	100
11'-6"	100	100	100	100
12'-0"	100	100	98	100
12'-6"	100	100	93	100
13'-0"	100	100	88	100

SLIDE TRACK MOUNT				
MAXIMUM DESIGN PRESSURE OF A SLIDE TRACK SCREEN FOR ANY LENGTH ATTACHED WITH 1/4"-14 ELCO DRIL-FLEX HWH TO ALUMINUM OR STEEL				
SCREEN SPANS UP TO	@ 6" O.C. 1/8" AL/ST	@ 6" O.C. 1/4" AL/ST	@ 4" O.C. 1/8" AL/ST	@ 4" O.C. 1/4" AL/ST
	PRESSURE (PSF)	PRESSURE (PSF)	PRESSURE (PSF)	PRESSURE (PSF)
4'-0"	100	100	100	100
4'-6"	100	100	100	100
5'-0"	100	100	100	100
5'-6"	100	100	100	100
6'-0"	100	100	100	100
6'-6"	100	100	100	100
7'-0"	100	100	100	100
7'-6"	100	100	100	100
8'-0"	100	100	100	100
8'-6"	100	100	100	100
9'-0"	100	100	100	100
9'-6"	100	100	100	100
10'-0"	100	100	100	100
10'-6"	100	100	100	100
11'-0"	100	100	100	100
11'-6"	100	100	100	100
12'-0"	96	100	100	100
12'-6"	91	100	100	100
13'-0"	86	100	100	100

NOTE: USE THIS TABLE TO DETERMINE THE MINIMUM WALL THICKNESS FOR THE MEMBER THE SLIDE TRACK IS ATTACHED

REVISIONS	DATE	#			

STORM SMART INDUSTRIES
6182 IDEWILD STREET, FORT MYERS, FL 33966
PHONE: 239.938.1000; FAX: 239.278.7950
WWW.STORMSMART.COM OR WWW.STORMCATCHER.COM

STORM CATCHER WIND ABATEMENT SYSTEM

TKJ Engineering, LLC.
14835 AUTUMN CREEK DRIVE, RIVERVIEW, FL 33569
PH: 613.404.7649; EM: TKJENGINEERING@VERIZON.NET
CERTIFICATE OF AUTHORIZATION NUMBER: 28582

DATE: 11/2/09
DRAWN BY: TKJ
SCALE: N.T.S.
PROJ. #: 09-002.1

TREVOR JOHNSON
LICENSED PROFESSIONAL ENGINEER
FLORIDA P.E. # 85824

5 OF 16

NOTE: LOADS AND FASTENING SCHEDULES ARE FOR ATTACHING BUILD-OUTS TO THE EXISTING STRUCTURE AND TO ALUMINUM OR STEEL MEMBERS

4" BUILD-OUTS				
MAXIMUM DESIGN PRESSURE OF ALL SCREEN SYSTEMS FOR ANY LENGTH ATTACHED WITH 5/16" ELCO ULTRACON HFH @ 6" O.C.				
SCREEN SPANS UP TO	CONC. & FILLED CMU (3500 PSI)	CONC. & FILLED CMU (2500 PSI)	HOLLOW CMU (1800 PSI)	TIMBER (S.G. = .55)
	PRESSURE (PSF)	PRESSURE (PSF)	PRESSURE (PSF)	PRESSURE (PSF)
4'-0"	100	100	100	100
4'-6"	100	100	94	100
5'-0"	100	100	80	100
5'-6"	100	100	69	100
6'-0"	100	100	60	100
6'-6"	100	100	53	100
7'-0"	100	100	47	100
7'-6"	100	100	43	98
8'-0"	100	100	39	88
8'-6"	100	100	35	81
9'-0"	100	100	32	74
9'-6"	100	100	30	68
10'-0"	100	95	28	63
10'-6"	100	88	26	58
11'-0"	94	82	24	54
11'-6"	88	76	22	50
12'-0"	82	71	21	47
12'-6"	77	67	19	44
13'-0"	72	63	18	41

4" BUILD-OUTS				
MAXIMUM DESIGN PRESSURE OF ALL SCREEN SYSTEMS FOR ANY LENGTH ATTACHED WITH 5/16" ELCO ULTRACON HFH @ 4" O.C.				
SCREEN SPANS UP TO	CONC. & FILLED CMU (3500 PSI)	CONC. & FILLED CMU (2500 PSI)	HOLLOW CMU (1800 PSI)	TIMBER (S.G. = .55)
	PRESSURE (PSF)	PRESSURE (PSF)	PRESSURE (PSF)	PRESSURE (PSF)
4'-0"	100	100	100	100
4'-6"	100	100	100	100
5'-0"	100	100	100	100
5'-6"	100	100	100	100
6'-0"	100	100	100	100
6'-6"	100	100	97	100
7'-0"	100	100	86	100
7'-6"	100	100	78	100
8'-0"	100	100	70	100
8'-6"	100	100	64	100
9'-0"	100	100	58	100
9'-6"	100	100	54	100
10'-0"	100	100	50	100
10'-6"	100	100	46	100
11'-0"	100	100	43	99
11'-6"	100	100	40	92
12'-0"	100	100	38	86
12'-6"	100	100	35	81
13'-0"	100	100	33	76

4" BUILD-OUTS				
MAXIMUM DESIGN PRESSURE OF ALL SCREEN SYSTEMS FOR ANY LENGTH ATTACHED WITH 1/4"-14 ELCO DRIL-FLEX HWH TO ALUMINUM OR STEEL				
SCREEN SPANS UP TO	@ 6" O.C. 1/8" AL/ST	@ 6" O.C. 1/4" AL/ST	@ 4" O.C. 1/8" AL/ST	@ 4" O.C. 1/4" AL/ST
	PRESSURE (PSF)	PRESSURE (PSF)	PRESSURE (PSF)	PRESSURE (PSF)
4'-0"	100	100	100	100
4'-6"	100	100	100	100
5'-0"	100	100	100	100
5'-6"	98	100	100	100
6'-0"	86	100	100	100
6'-6"	76	100	100	100
7'-0"	68	100	100	100
7'-6"	61	100	100	100
8'-0"	55	100	100	100
8'-6"	50	100	91	100
9'-0"	46	100	84	100
9'-6"	42	100	77	100
10'-0"	39	100	71	100
10'-6"	36	100	66	100
11'-0"	34	98	61	100
11'-6"	32	92	57	100
12'-0"	30	86	53	100
12'-6"	28	81	50	100
13'-0"	26	76	47	100

NOTE: USE THIS TABLE TO DETERMINE THE MINIMUM WALL THICKNESS FOR THE MEMBER THE 4" BUILD-OUT IS ATTACHED

3" BUILD-OUTS				
MAXIMUM DESIGN PRESSURE OF ALL SCREEN SYSTEMS FOR ANY LENGTH ATTACHED WITH 5/16" ELCO ULTRACON HFH @ 6" O.C.				
SCREEN SPANS UP TO	CONC. & FILLED CMU (3500 PSI)	CONC. & FILLED CMU (2500 PSI)	HOLLOW CMU (1800 PSI)	TIMBER (S.G. = .55)
	PRESSURE (PSF)	PRESSURE (PSF)	PRESSURE (PSF)	PRESSURE (PSF)
4'-0"	100	100	100	100
4'-6"	100	100	95	100
5'-0"	100	100	80	100
5'-6"	100	100	69	100
6'-0"	100	100	60	100
6'-6"	100	100	53	100
7'-0"	100	100	47	100
7'-6"	100	100	43	99
8'-0"	100	100	39	89
8'-6"	100	100	35	81
9'-0"	100	100	32	74
9'-6"	100	100	30	67
10'-0"	100	96	27	63
10'-6"	100	89	25	58
11'-0"	95	83	23	54
11'-6"	88	77	22	50
12'-0"	82	71	21	47
12'-6"	77	67	19	44
13'-0"	72	63	18	41

3" BUILD-OUTS				
MAXIMUM DESIGN PRESSURE OF ALL SCREEN SYSTEMS FOR ANY LENGTH ATTACHED WITH 5/16" ELCO ULTRACON HFH @ 4" O.C.				
SCREEN SPANS UP TO	CONC. & FILLED CMU (3500 PSI)	CONC. & FILLED CMU (2500 PSI)	HOLLOW CMU (1800 PSI)	TIMBER (S.G. = .55)
	PRESSURE (PSF)	PRESSURE (PSF)	PRESSURE (PSF)	PRESSURE (PSF)
4'-0"	100	100	100	100
4'-6"	100	100	100	100
5'-0"	100	100	100	100
5'-6"	100	100	100	100
6'-0"	100	100	100	100
6'-6"	100	100	98	100
7'-0"	100	100	87	100
7'-6"	100	100	78	100
8'-0"	100	100	70	100
8'-6"	100	100	64	100
9'-0"	100	100	58	100
9'-6"	100	100	54	100
10'-0"	100	100	50	100
10'-6"	100	100	46	100
11'-0"	100	100	43	100
11'-6"	100	100	40	93
12'-0"	100	100	37	86
12'-6"	100	100	35	81
13'-0"	100	100	33	76

3" BUILD-OUTS				
MAXIMUM DESIGN PRESSURE OF ALL SCREEN SYSTEMS FOR ANY LENGTH ATTACHED WITH 1/4"-14 ELCO DRIL-FLEX HWH TO ALUMINUM OR STEEL				
SCREEN SPANS UP TO	@ 6" O.C. 1/8" AL/ST	@ 6" O.C. 1/4" AL/ST	@ 4" O.C. 1/8" AL/ST	@ 4" O.C. 1/4" AL/ST
	PRESSURE (PSF)	PRESSURE (PSF)	PRESSURE (PSF)	PRESSURE (PSF)
4'-0"	100	100	100	100
4'-6"	100	100	100	100
5'-0"	100	100	100	100
5'-6"	99	100	100	100
6'-0"	87	100	100	100
6'-6"	76	100	100	100
7'-0"	68	100	100	100
7'-6"	61	100	100	100
8'-0"	55	100	100	100
8'-6"	50	100	92	100
9'-0"	46	100	84	100
9'-6"	42	100	77	100
10'-0"	39	100	71	100
10'-6"	36	100	66	100
11'-0"	34	99	61	100
11'-6"	31	93	57	100
12'-0"	29	86	53	100
12'-6"	27	81	50	100
13'-0"	26	76	47	100

NOTE: USE THIS TABLE TO DETERMINE THE MINIMUM WALL THICKNESS FOR THE MEMBER THE 3" BUILD-OUT IS ATTACHED

REVISIONS	DATE	#

STORM SMART INDUSTRIES
 6182 IDLEWILD STREET, FORT MYERS, FL 33966
 PHONE: 239.938.1000; FAX: 239.278.7950
 WWW.STORMSMART.COM OR WWW.STORMCATCHER.COM

STORM CATCHER WIND ABATEMENT SYSTEM

TKJ Engineering, LLC.
 11835 AUTUMN CREEK DRIVE, RIVERVIEW, FL 33569
 PH: 813.404.7646; EM: TKJENGINEERING@VERIZON.NET
 CERTIFICATE OF AUTHORIZATION NUMBER: 28582

DATE: 11/2/09
 DRAWN BY: TKJ
 SCALE: N.T.S.
 PROJ. #: 09-002.1

THIS IS TO CERTIFY THAT, TO THE BEST OF MY KNOWLEDGE, THESE PLANS & SPECIFICATIONS ARE IN COMPLIANCE WITH THE BUILDING CODE REQUIREMENTS

Trevor Johnson
 11-2-09
 TREVOR JOHNSON
 FLORIDA P.E. # 65624

NOTE: LOADS AND FASTENING SCHEDULES ARE FOR ATTACHING BUILD-INS TO THE EXISTING STRUCTURE AND TO ALUMINUM OR STEEL MEMBERS

4" BUILD-INS				
MAXIMUM DESIGN PRESSURE OF ALL SCREEN SYSTEMS FOR ANY LENGTH ATTACHED WITH 5/16" ELCO ULTRACON HFH @ 6" O.C.				
SCREEN SPANS UP TO	CONC. & FILLED CMU (3500 PSI) PRESSURE (PSF)	CONC. & FILLED CMU (2500 PSI) PRESSURE (PSF)	HOLLOW CMU (1800 PSI) PRESSURE (PSF)	TIMBER (S.G. = .55) PRESSURE (PSF)
4'-0"	100	100	93	100
4'-6"	100	100	80	100
5'-0"	100	100	70	100
5'-6"	100	100	61	100
6'-0"	100	100	55	100
6'-6"	100	100	49	100
7'-0"	100	100	45	100
7'-6"	100	100	41	95
8'-0"	100	100	37	87
8'-6"	100	100	34	81
9'-0"	100	98	32	74
9'-6"	100	91	30	70
10'-0"	96	85	28	65
10'-6"	90	80	26	61
11'-0"	85	75	24	57
11'-6"	80	71	23	55
12'-0"	75	66	21	51
12'-6"	71	63	20	49
13'-0"	67	60	19	47

4" BUILD-INS				
MAXIMUM DESIGN PRESSURE OF ALL SCREEN SYSTEMS FOR ANY LENGTH ATTACHED WITH 5/16" ELCO ULTRACON HFH @ 4" O.C.				
SCREEN SPANS UP TO	CONC. & FILLED CMU (3500 PSI) PRESSURE (PSF)	CONC. & FILLED CMU (2500 PSI) PRESSURE (PSF)	HOLLOW CMU (1800 PSI) PRESSURE (PSF)	TIMBER (S.G. = .55) PRESSURE (PSF)
4'-0"	100	100	100	100
4'-6"	100	100	100	100
5'-0"	100	100	100	100
5'-6"	100	100	100	100
6'-0"	100	100	92	100
6'-6"	100	100	82	100
7'-0"	100	100	75	100
7'-6"	100	100	69	100
8'-0"	100	100	63	100
8'-6"	100	100	58	100
9'-0"	100	100	54	100
9'-6"	100	100	50	100
10'-0"	100	100	47	100
10'-6"	100	100	44	100
11'-0"	100	100	41	95
11'-6"	100	100	39	91
12'-0"	100	100	36	86
12'-6"	100	100	34	81
13'-0"	100	100	32	77

4" BUILD-INS				
MAXIMUM DESIGN PRESSURE OF ALL SCREEN SYSTEMS FOR ANY LENGTH ATTACHED WITH 1/4"-14 ELCO DRIL-FLEX HWH TO ALUMINUM OR STEEL				
SCREEN SPANS UP TO	@ 6" O.C. 1/8" AL/ST PRESSURE (PSF)	@ 6" O.C. 1/4" AL/ST PRESSURE (PSF)	@ 4" O.C. 1/8" AL/ST PRESSURE (PSF)	@ 4" O.C. 1/4" AL/ST PRESSURE (PSF)
4'-0"	100	100	100	100
4'-6"	100	100	100	100
5'-0"	89	100	100	100
5'-6"	79	100	100	100
6'-0"	70	100	100	100
6'-6"	63	100	100	100
7'-0"	57	100	96	100
7'-6"	52	100	88	100
8'-0"	47	100	81	100
8'-6"	44	100	74	100
9'-0"	41	100	69	100
9'-6"	37	100	64	100
10'-0"	35	100	60	100
10'-6"	33	94	56	100
11'-0"	31	88	52	100
11'-6"	29	83	49	100
12'-0"	27	78	46	100
12'-6"	26	74	44	100
13'-0"	25	71	42	100

NOTE: USE THIS TABLE TO DETERMINE THE MINIMUM WALL THICKNESS FOR THE MEMBER THE 4" BUILD-IN IS ATTACHED

3" BUILD-INS				
MAXIMUM DESIGN PRESSURE OF ALL SCREEN SYSTEMS FOR ANY LENGTH ATTACHED WITH 5/16" ELCO ULTRACON HFH @ 6" O.C.				
SCREEN SPANS UP TO	CONC. & FILLED CMU (3500 PSI) PRESSURE (PSF)	CONC. & FILLED CMU (2500 PSI) PRESSURE (PSF)	HOLLOW CMU (1800 PSI) PRESSURE (PSF)	TIMBER (S.G. = .55) PRESSURE (PSF)
4'-0"	100	100	81	100
4'-6"	100	100	70	100
5'-0"	100	100	61	100
5'-6"	100	100	54	100
6'-0"	100	100	49	100
6'-6"	100	100	43	100
7'-0"	100	100	39	92
7'-6"	100	100	36	84
8'-0"	100	100	33	77
8'-6"	100	93	31	72
9'-0"	96	86	28	67
9'-6"	90	80	26	62
10'-0"	84	75	24	58
10'-6"	79	70	23	54
11'-0"	74	66	22	52
11'-6"	70	62	21	48
12'-0"	66	59	19	46
12'-6"	63	56	18	44
13'-0"	60	53	18	42

3" BUILD-INS				
MAXIMUM DESIGN PRESSURE OF ALL SCREEN SYSTEMS FOR ANY LENGTH ATTACHED WITH 5/16" ELCO ULTRACON HFH @ 4" O.C.				
SCREEN SPANS UP TO	CONC. & FILLED CMU (3500 PSI) PRESSURE (PSF)	CONC. & FILLED CMU (2500 PSI) PRESSURE (PSF)	HOLLOW CMU (1800 PSI) PRESSURE (PSF)	TIMBER (S.G. = .55) PRESSURE (PSF)
4'-0"	100	100	100	100
4'-6"	100	100	100	100
5'-0"	100	100	100	100
5'-6"	100	100	90	100
6'-0"	100	100	80	100
6'-6"	100	100	73	100
7'-0"	100	100	66	100
7'-6"	100	100	60	100
8'-0"	100	100	55	100
8'-6"	100	100	51	100
9'-0"	100	100	47	100
9'-6"	100	100	44	100
10'-0"	100	100	41	96
10'-6"	100	100	39	90
11'-0"	100	100	36	85
11'-6"	100	100	34	80
12'-0"	100	98	32	76
12'-6"	100	94	30	72
13'-0"	99	89	29	69

3" BUILD-INS				
MAXIMUM DESIGN PRESSURE OF ALL SCREEN SYSTEMS FOR ANY LENGTH ATTACHED WITH 1/4"-14 ELCO DRIL-FLEX HWH TO ALUMINUM OR STEEL				
SCREEN SPANS UP TO	@ 6" O.C. 1/8" AL/ST PRESSURE (PSF)	@ 6" O.C. 1/4" AL/ST PRESSURE (PSF)	@ 4" O.C. 1/8" AL/ST PRESSURE (PSF)	@ 4" O.C. 1/4" AL/ST PRESSURE (PSF)
4'-0"	100	100	100	100
4'-6"	89	100	100	100
5'-0"	77	100	100	100
5'-6"	68	100	100	100
6'-0"	61	100	100	100
6'-6"	55	100	92	100
7'-0"	50	100	84	100
7'-6"	45	100	76	100
8'-0"	42	100	70	100
8'-6"	39	100	65	100
9'-0"	35	100	60	100
9'-6"	33	94	56	100
10'-0"	31	88	52	100
10'-6"	29	82	49	100
11'-0"	27	78	46	100
11'-6"	26	73	44	100
12'-0"	24	69	41	100
12'-6"	23	66	39	100
13'-0"	22	62	37	100

NOTE: USE THIS TABLE TO DETERMINE THE MINIMUM WALL THICKNESS FOR THE MEMBER THE 3" BUILD-IN IS ATTACHED

#	DATE	REVISIONS

STORM SMART INDUSTRIES
 6182 IDLEWILD STREET, FORT MYERS, FL 33966
 PHONE: 239.938.1000; FAX: 239.276.7950
 WWW.STORMSMART.COM OR WWW.STORMCATCHER.COM

STORM CATCHER WIND ABATEMENT SYSTEM

TKJ Engineering, LLC.
 11835 AUTUMN CREEK DRIVE, RIVERVIEW, FL 33569
 PH.: 813.404.7649; EM: TKJENGINEERING@VERIZON.NET
 CERTIFICATE OF AUTHORIZATION NUMBER: 28592

DATE: 11/2/09
 DRAWN BY: TKJ
 SCALE: N.T.S.
 PROJ. #: 09-002.1



THIS IS TO CERTIFY THAT, TO THE BEST OF MY KNOWLEDGE, THESE PLANS & SPECIFICATIONS ARE IN COMPLIANCE WITH THE BUILDING CODE REQUIREMENTS

Trevor Johnson
 11-2-09
 TREVOR JOHNSON
 FLORIDA P.E. # 68624

NOTE: LOADS AND FASTENING SCHEDULES ARE FOR ATTACHING 2" BUILD-INS, AND 3/8" ANGLES TO THE EXISTING STRUCTURE AND TO ALUMINUM OR STEEL MEMBERS

2" BUILD-INS W/ 1/4" WALLS & 3/8" ANGLES				
MAXIMUM DESIGN PRESSURE OF ALL SCREEN SYSTEMS FOR ANY LENGTH ATTACHED WITH 5/16" ELCO ULTRACON HFH @ 6" O.C.				
SCREEN SPANS UP TO	CONC. & FILLED CMU (3500 PSI) PRESSURE (PSF)	CONC. & FILLED CMU (2500 PSI) PRESSURE (PSF)	HOLLOW CMU (1800 PSI) PRESSURE (PSF)	TIMBER (S.G. = .55) PRESSURE (PSF)
4'-0"	100	100	65	100
4'-6"	100	100	57	100
5'-0"	100	100	49	100
5'-6"	100	100	44	100
6'-0"	100	100	39	91
6'-6"	100	100	35	82
7'-0"	100	95	32	75
7'-6"	97	88	29	69
8'-0"	90	81	27	64
8'-6"	83	74	25	59
9'-0"	77	69	23	55
9'-6"	72	65	22	52
10'-0"	68	61	20	48
10'-6"	63	57	19	46
11'-0"	60	54	18	43
11'-6"	57	50	17	40
12'-0"	54	48	16	38
12'-6"	51	46	15	36
13'-0"	49	43	15	34

2" BUILD-INS W/ 1/4" WALLS & 3/8" ANGLES				
MAXIMUM DESIGN PRESSURE OF ALL SCREEN SYSTEMS FOR ANY LENGTH ATTACHED WITH 5/16" ELCO ULTRACON HFH @ 4" O.C.				
SCREEN SPANS UP TO	CONC. & FILLED CMU (3500 PSI) PRESSURE (PSF)	CONC. & FILLED CMU (2500 PSI) PRESSURE (PSF)	HOLLOW CMU (1800 PSI) PRESSURE (PSF)	TIMBER (S.G. = .55) PRESSURE (PSF)
4'-0"	100	100	100	100
4'-6"	100	100	93	100
5'-0"	100	100	82	100
5'-6"	100	100	72	100
6'-0"	100	100	64	100
6'-6"	100	100	58	100
7'-0"	100	100	53	100
7'-6"	100	100	49	100
8'-0"	100	100	45	100
8'-6"	100	100	41	96
9'-0"	100	100	39	90
9'-6"	100	100	36	84
10'-0"	100	99	33	79
10'-6"	100	94	32	74
11'-0"	99	88	30	70
11'-6"	93	83	28	66
12'-0"	88	79	26	63
12'-6"	84	76	25	60
13'-0"	80	72	24	57

2" BUILD-INS W/ 1/4" WALLS & 3/8" ANGLES				
MAXIMUM DESIGN PRESSURE OF ALL SCREEN SYSTEMS FOR ANY LENGTH ATTACHED WITH 1/4"-14 ELCO DRIL-FLEX HWH TO ALUMINUM OR STEEL				
SCREEN SPANS UP TO	@ 6" O.C. 1/8" AL/ST PRESSURE (PSF)	@ 6" O.C. 1/4" AL/ST PRESSURE (PSF)	@ 4" O.C. 1/8" AL/ST PRESSURE (PSF)	@ 4" O.C. 1/4" AL/ST PRESSURE (PSF)
4'-0"	81	100	100	100
4'-6"	70	100	100	100
5'-0"	61	100	100	100
5'-6"	55	100	90	100
6'-0"	49	100	81	100
6'-6"	44	100	73	100
7'-0"	40	100	66	100
7'-6"	37	100	61	100
8'-0"	34	94	56	100
8'-6"	31	87	51	100
9'-0"	29	81	48	100
9'-6"	27	76	45	100
10'-0"	25	71	42	100
10'-6"	24	67	39	100
11'-0"	23	63	37	100
11'-6"	21	59	35	98
12'-0"	20	56	33	93
12'-6"	19	53	32	88
13'-0"	18	51	30	84

NOTE: USE THIS TABLE TO DETERMINE THE MINIMUM WALL THICKNESS FOR THE MEMBER THE 2" BUILD-IN OR 3/8" ANGLES ARE ATTACHED

#	DATE	REVISIONS

STORM SMART INDUSTRIES
 6182 IDLEWILD STREET, FORT MYERS, FL 33966
 PHONE: 239.936.1000; FAX: 239.278.7950
 WWW.STORMSMART.COM OR WWW.STORMCATCHER.COM

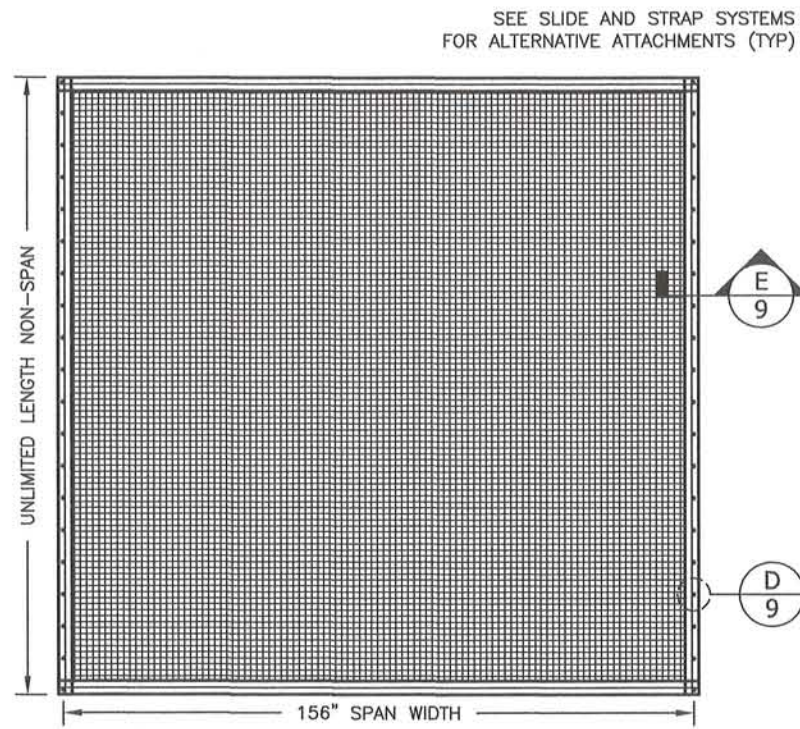
STORM CATCHER WIND ABATEMENT SYSTEM

TKJ Engineering, LLC.
 11835 AUTUMN CREEK DRIVE, RIVERVIEW, FL 33589
 PH: 813.404.7649; EM: TKJENGINEERING@VERIZON.NET
 CERTIFICATE OF AUTHORIZATION NUMBER: 28582

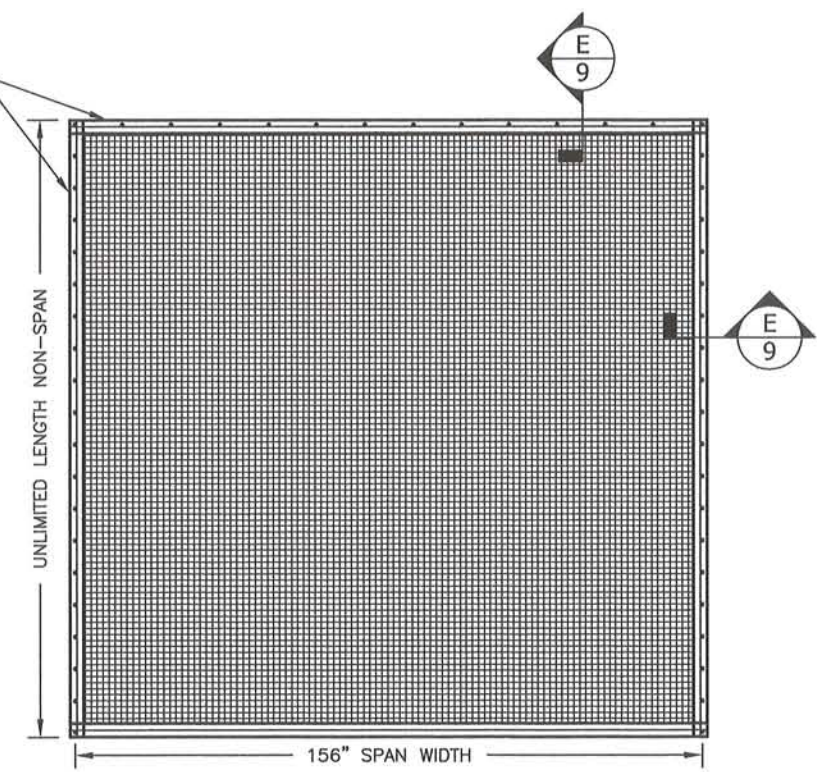
DATE: 11/2/09
 DRAWN BY: TKJ
 SCALE: N.T.S.
 PROJ. #: 09-002.1

THIS IS TO CERTIFY THAT, TO THE BEST OF MY KNOWLEDGE, THESE PLANS & SPECIFICATIONS ARE IN COMPLIANCE WITH THE BUILDING CODE REQUIREMENTS

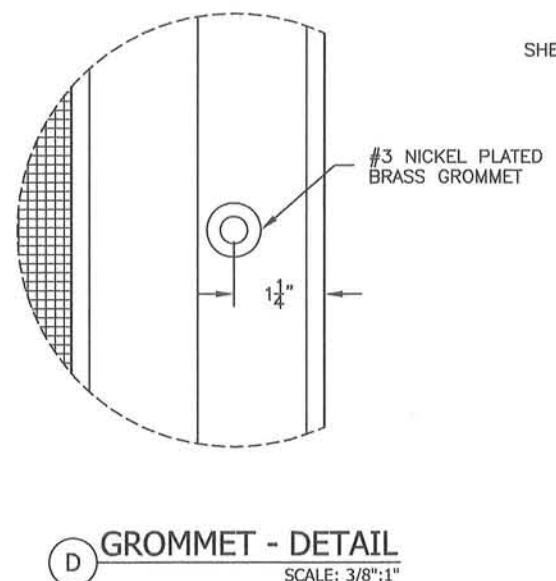
Trevor Johnson
 11-2-09
 TREVOR JOHNSON
 FLORIDA P.E. # 65624



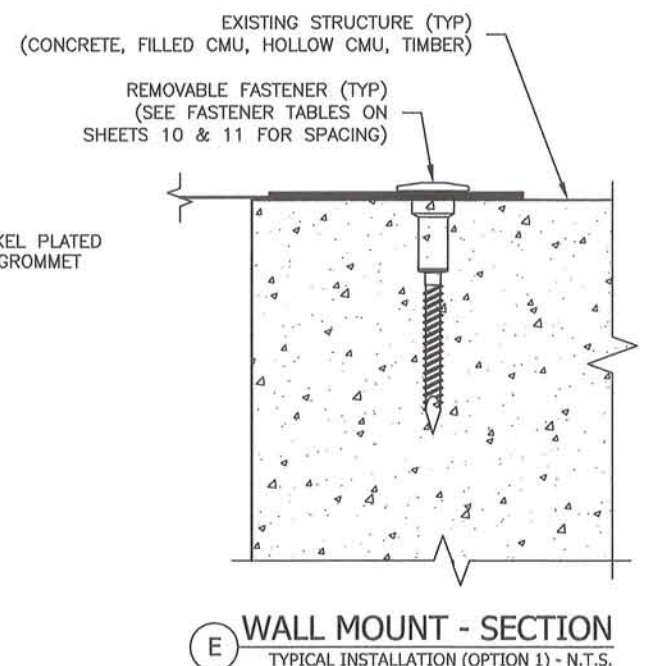
GROMMET SCREEN SINGLE PANEL - ELEVATION
TYPICAL 2 SIDED ATTACHMENT - VERTICAL OR HORIZONTAL INSTALLATION - N.T.S.



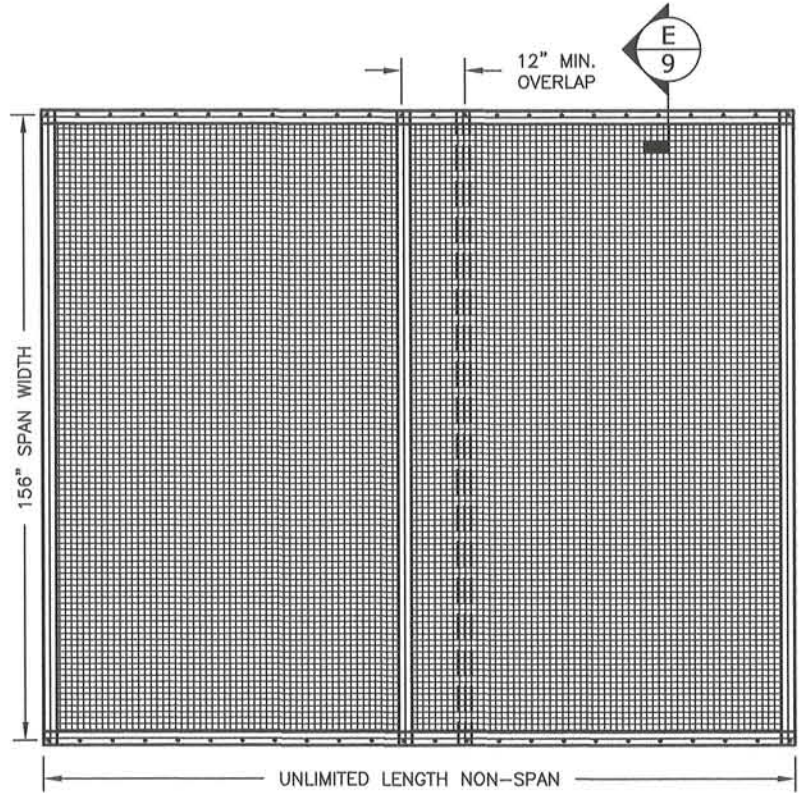
GROMMET SCREEN SINGLE PANEL - ELEVATION
3 OR 4 SIDED ATTACHMENT - VERTICAL OR HORIZONTAL INSTALLATION - SCALE N.T.S.
NOTE: FOR 4 SIDED ATTACHMENT THE SPAN IS IN THE SHORT DIMENSION BETWEEN FASTENERS.



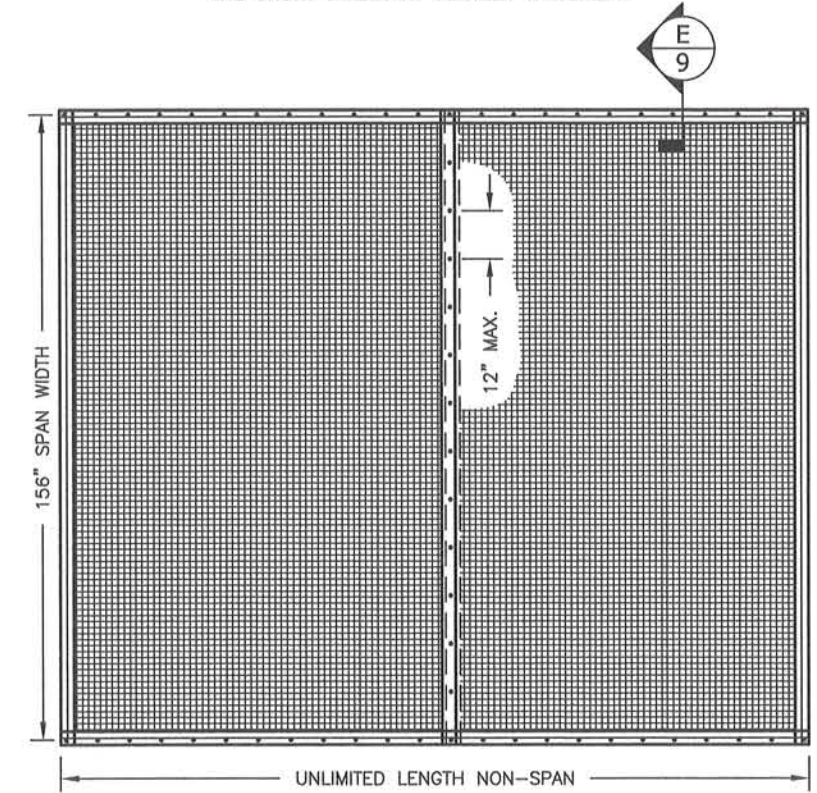
D GROMMET - DETAIL
SCALE: 3/8"=1"



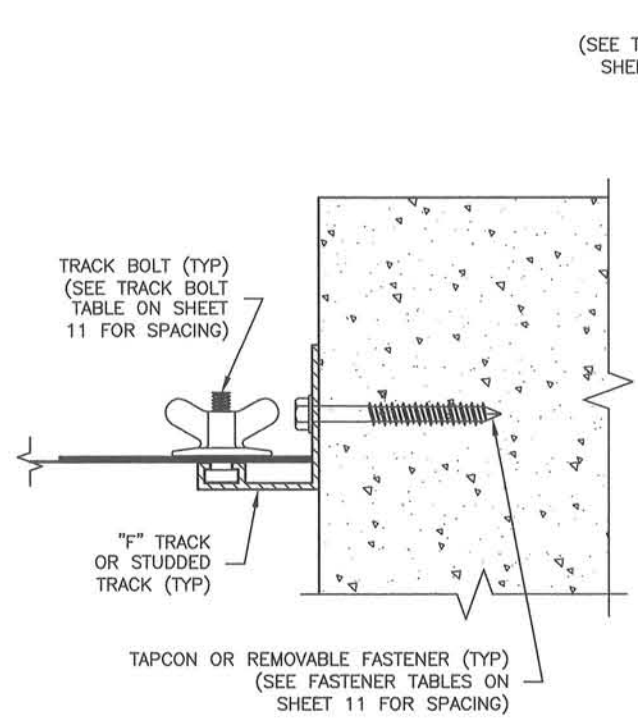
E WALL MOUNT - SECTION
TYPICAL INSTALLATION (OPTION 1) - N.T.S.



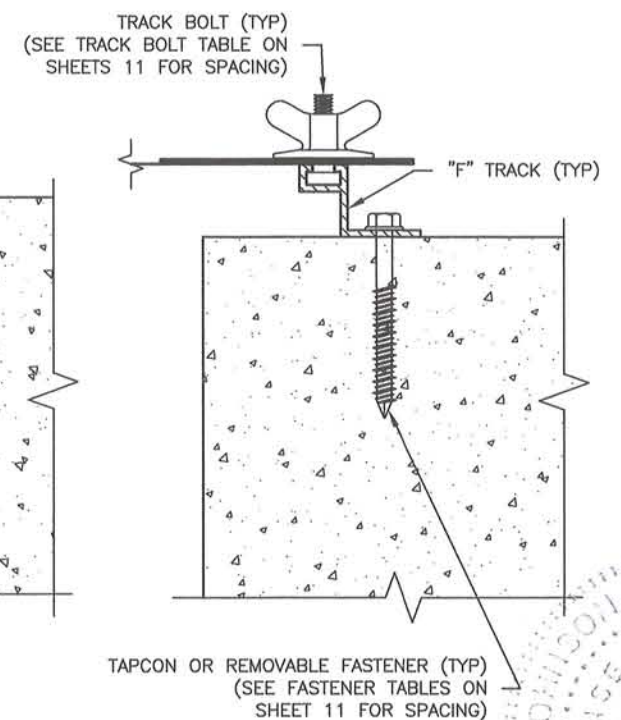
GROMMET SCREEN MULTIPLE PANEL - ELEVATION
LAPPED SCREEN - VERTICAL OR HORIZONTAL INSTALLATION - N.T.S.



GROMMET SCREEN MULTIPLE PANEL - ELEVATION
OPTIONAL COLUMN ATTACHMENT - VERTICAL OR HORIZONTAL INSTALLATION - N.T.S.



E BUILD-IN MOUNT - SECTION
ANGLED "F" OR STUDDED INSTALLATION (OPTION 2) - N.T.S.



E "F" TRACK MOUNT - SECTION
STANDARD OR BUILD-OUT INSTALLATION (OPTION 3) - N.T.S.

REVISIONS	DATE	#

STORM SMART INDUSTRIES
6162 IDLEWILD STREET, FORT MYERS, FL 33966
PHONE: 239.938.1000; FAX: 239.278.7950
WWW.STORMSMART.COM OR WWW.STORMCATCHER.COM

STORM CATCHER WIND ABATEMENT SYSTEM

TKJ Engineering, LLC.
11835 AUTUMN CREEK DRIVE, RIVERVIEW, FL 33569
PH: 813.404.7649; EML: TKJENGINEERING@VERIZON.NET
CERTIFICATE OF AUTHORIZATION NUMBER: 28582
DATE: 11/2/09
DRAWN BY: TKJ
SCALE: N.T.S.
PROJ. #: 09-002.1

THIS IS TO CERTIFY THAT, TO THE BEST OF MY KNOWLEDGE, THESE PLANS & SPECIFICATIONS ARE IN COMPLIANCE WITH THE BUILDING CODE REQUIREMENTS.
Trevor Johnson
11-2-09
TREVOR JOHNSON
FLORIDA P.E. # 65624

NOTE: LOADS AND FASTENING SCHEDULES ARE FOR ATTACHING GROMMETS TO THE EXISTING STRUCTURE AND TO "F" TRACKS OR STUDDED ANGLE

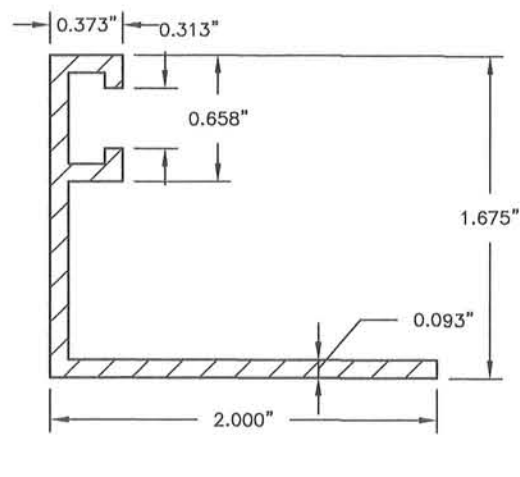
MAXIMUM DESIGN PRESSURE OF A GROMMET SCREEN FOR ANY LENGTH ATTACHED WITH 1/4"-20 W/ ELCO PANELMATE INSERT OR 3/8"-16 W/ ITW MULTI-SET II, POWERS DROPIN, & CALK-IN (PSF)																				
SCREEN SPANS UP TO	CONC. & FILLED CMU (3500 PSI)					CONC. & FILLED CMU (2500 PSI)					HOLLOW CMU (1800 PSI)					TIMBER (S.G. = .55)				
	SPACING (INCHES)					SPACING (INCHES)					SPACING (INCHES)					SPACING (INCHES)				
	8	7	6	5	4	8	7	6	5	4	8	7	6	5	4	8	7	6	5	4
4'-0"	100	100	100	100	100	100	100	100	100	100	100	100	100	100	100	100	100	100	100	100
4'-6"	100	100	100	100	100	100	100	100	100	100	100	100	100	100	100	100	100	100	100	100
5'-0"	100	100	100	100	100	100	100	100	100	100	100	100	100	100	100	100	100	100	100	100
5'-6"	100	100	100	100	100	100	100	100	100	100	100	100	100	100	100	100	100	100	100	100
6'-0"	100	100	100	100	100	100	100	100	100	100	100	100	100	100	100	100	100	100	100	100
6'-6"	100	100	100	100	100	100	100	100	100	100	100	100	100	100	98	100	100	100	100	100
7'-0"	100	100	100	100	100	100	100	100	100	100	100	100	100	100	89	100	100	100	100	100
7'-6"	100	100	100	100	100	100	100	100	100	100	100	100	100	100	80	96	100	100	100	100
8'-0"	100	100	100	100	100	100	100	100	100	100	100	100	100	100	74	88	100	100	100	100
8'-6"	100	100	100	100	100	100	100	100	100	100	100	100	100	100	68	81	99	100	100	100
9'-0"	100	100	100	100	100	100	100	100	100	100	100	100	100	100	62	75	92	100	100	100
9'-6"	100	100	100	100	100	100	100	100	100	100	100	100	100	100	58	70	85	100	100	100
10'-0"	100	100	100	100	100	100	100	100	100	100	100	100	100	100	54	65	79	100	100	100
10'-6"	100	100	100	100	100	100	100	100	100	94	100	100	100	100	50	61	75	95	100	100
11'-0"	100	100	100	100	100	98	100	100	100	100	87	100	100	100	48	57	70	89	100	100
11'-6"	100	100	100	100	100	93	100	100	100	100	83	98	100	100	44	53	66	83	100	100
12'-0"	100	100	100	100	100	88	100	100	100	100	78	93	100	100	42	50	62	78	100	100
12'-6"	100	100	100	100	100	83	99	100	100	100	74	88	100	100	40	47	58	74	100	100
13'-0"	95	100	100	100	100	79	94	100	100	100	69	83	100	100	38	45	55	70	95	100

MAXIMUM FASTENER SPACING OF A GROMMET SCREEN FOR ANY LENGTH ATTACHED WITH 1/4" ELCO PANELMATE PRO, PLUS, FEMALE, TVAS OR 1/4" ITW SAMMYS & STORM GUARD (INCHES)																				
SCREEN SPANS UP TO	CONC. & FILLED CMU (3500 PSI)					CONC. & FILLED CMU (2500 PSI)					HOLLOW CMU (1800 PSI)					TIMBER (S.G. = .55)				
	SPACING (INCHES)					SPACING (INCHES)					SPACING (INCHES)					SPACING (INCHES)				
	8	7	6	5	4	8	7	6	5	4	8	7	6	5	4	8	7	6	5	4
4'-0"	100	100	100	100	100	100	100	100	100	100	100	100	100	100	100	100	100	100	100	100
4'-6"	100	100	100	100	100	100	100	100	100	100	100	100	100	100	100	100	100	100	100	100
5'-0"	100	100	100	100	100	100	100	100	100	100	100	100	100	100	100	100	100	100	100	100
5'-6"	100	100	100	100	100	100	100	100	100	100	100	100	100	100	100	100	100	100	100	100
6'-0"	100	100	100	100	100	100	100	100	100	100	100	100	100	100	100	100	100	100	100	100
6'-6"	100	100	100	100	100	100	100	100	100	100	100	100	100	100	98	100	100	100	100	100
7'-0"	100	100	100	100	100	100	100	100	100	100	100	100	100	100	89	100	100	100	100	100
7'-6"	100	100	100	100	100	100	100	100	100	100	100	100	100	100	81	97	100	100	100	100
8'-0"	100	100	100	100	100	100	100	100	100	100	100	100	100	100	74	88	100	100	100	100
8'-6"	100	100	100	100	100	100	100	100	100	100	100	100	100	100	68	81	100	100	100	100
9'-0"	100	100	100	100	100	100	100	100	100	100	100	100	100	100	63	75	92	100	100	100
9'-6"	100	100	100	100	100	100	100	100	100	100	100	100	100	100	58	70	86	100	100	100
10'-0"	100	100	100	100	100	100	100	100	100	100	100	100	100	100	54	65	79	100	100	100
10'-6"	100	100	100	100	100	100	100	100	100	89	100	100	100	100	51	61	75	95	100	100
11'-0"	95	100	100	100	100	83	100	100	100	100	48	57	70	89	48	57	70	89	100	100
11'-6"	89	100	100	100	100	78	94	100	100	100	45	54	66	84	45	54	66	84	100	100
12'-0"	83	100	100	100	100	74	88	100	100	100	42	50	62	79	42	50	62	79	100	100
12'-6"	79	94	100	100	100	70	83	100	100	100	40	48	59	75	40	48	59	75	100	100
13'-0"	75	89	100	100	100	66	79	97	100	100	38	45	55	71	38	45	55	71	95	100

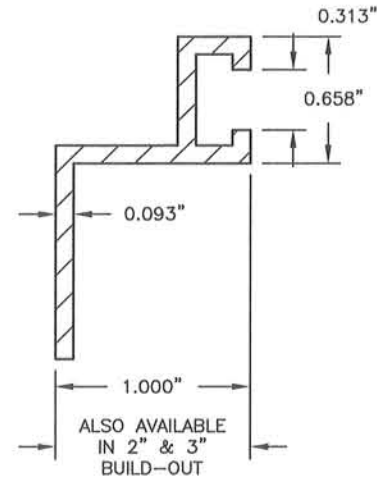
MAXIMUM DESIGN PRESSURE OF A GROMMET SCREEN FOR ANY LENGTH ATTACHED WITH 1/4"-20 W/ POWERS CALK-IN (PSF)																				
SCREEN SPANS UP TO	CONC. & FILLED CMU (3500 PSI)					CONC. & FILLED CMU (2500 PSI)					HOLLOW CMU (1800 PSI)									
	SPACING (INCHES)					SPACING (INCHES)					SPACING (INCHES)									
	8	7	6	5	4	8	7	6	5	4	8	7	6	5	4					
4'-0"	100	100	100	100	100	100	100	100	100	100	100	100	100	100	100	100	100	100	100	100
4'-6"	100	100	100	100	100	100	100	100	100	100	100	100	100	100	100	100	100	100	100	100
5'-0"	100	100	100	100	100	100	100	100	100	100	100	100	100	100	100	100	100	100	100	100
5'-6"	100	100	100	100	100	100	100	100	100	100	100	100	100	100	100	100	100	100	100	100
6'-0"	100	100	100	100	100	100	100	100	100	100	100	100	100	100	91	100	100	100	100	100
6'-6"	100	100	100	100	100	100	100	100	100	100	100	100	100	100	82	98	100	100	100	100
7'-0"	100	100	100	100	100	100	100	100	100	100	100	100	100	100	74	89	100	100	100	100
7'-6"	100	100	100	100	100	100	100	100	100	100	100	100	100	100	67	80	99	100	100	100
8'-0"	100	100	100	100	100	100	100	100	100	100	100	100	100	100	62	74	90	100	100	100
8'-6"	100	100	100	100	100	100	100	100	100	100	100	100	100	100	57	68	83	100	100	100
9'-0"	98	100	100	100	100	96	100	100	100	100	52	62	77	98	100	100	100	100	100	100
9'-6"	91	100	100	100	100	89	100	100	100	100	49	58	72	91	100	100	100	100	100	100
10'-0"	85	100	100	100	100	82	99	100	100	100	45	54	66	85	100	100	100	100	100	100
10'-6"	80	95	100	100	100	77	92	100	100	100	42	50	62	80	100	100	100	100	100	100
11'-0"	74	89	100	100	100	72	86	100	100	100	40	47	58	74	100	100	100	100	100	100
11'-6"	70	83	100	100	100	68	81	100	100	100	37	44	55	70	94	100	100	100	100	100
12'-0"	66	78	97	100	100	64	76	94	100	100	35	42	51	66	89	100	100	100	100	100
12'-6"	62	74	91	100	100	60	72	89	100	100	33	40	48	62	83	100	100	100	100	100
13'-0"	59	70	86	100	100	57	68	84	100	100	31	38	46	59	79	100	100	100	100	100

MAXIMUM DESIGN PRESSURE OF A GROMMET SCREEN FOR ANY LENGTH ATTACHED WITH 1/4"-20 ALL POINTS TRACK BOLT OR STUD (PSF)					
SCREEN SPANS UP TO	ALUMINUM TRACK (6063-T6)				
	SPACING (INCHES)				
	8	7	6	5	4
4'-0"	100	100	100	100	100
4'-6"	100	100	100	100	100
5'-0"	100	100	100	100	100
5'-6"	100	100	100	100	100
6'-0"	100	100	100	100	100
6'-6"	100	100	100	100	100
7'-0"	100	100	100	100	100
7'-6"	100	100	100	100	100
8'-0"	100	100	100	100	100
8'-6"	100	100	100	100	100
9'-0"	93	100	100	100	100
9'-6"	86	100	100	100	100
10'-0"	80	97	100	100	100
10'-6"	75	90	100	100	100
11'-0"	70	85	100	100	100
11'-6"	66	79	98	100	100
12'-0"	62	74	92	100	100
12'-6"	59	70	87	100	100
13'-0"	55	67	82	100	100

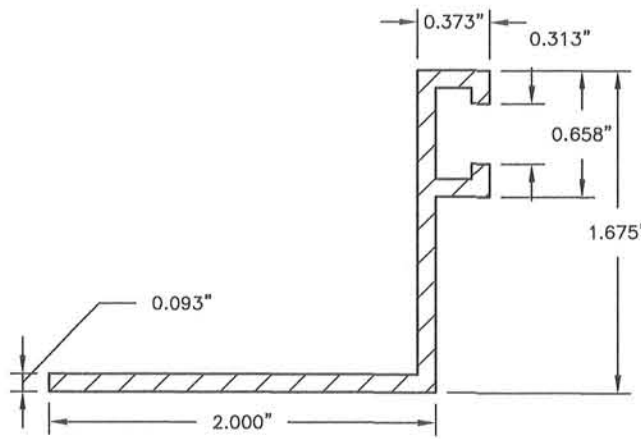
MAXIMUM DESIGN PRESSURE OF A GROMMET SCREEN FOR ANY LENGTH ATTACHED WITH 1/4"-20 ALL POINTS WOOD BUSHING (PSF)					
SCREEN SPANS UP TO	TIMBER (S.G. = .55)				
	SPACING (INCHES)				
	8	7	6	5	4
4'-0"	100	100	100		



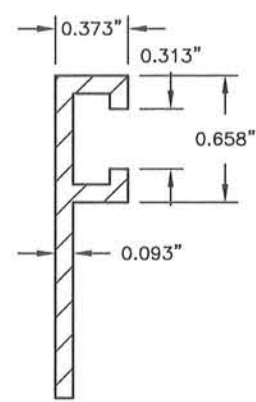
ANGLED "F" TRACK
6063-T6 ALUMINUM - SCALE: 1:1



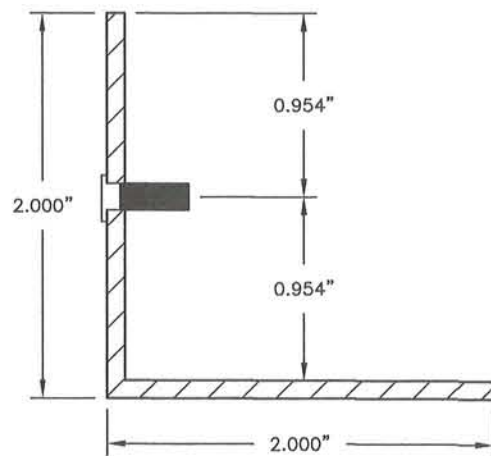
BUILD-OUT "F" TRACK
6063-T6 ALUMINUM - SCALE: 1:1



REVERSE ANGLED "F" TRACK
6063-T6 ALUMINUM - SCALE: 1:1



STANDARD "F" TRACK
6063-T6 ALUMINUM - SCALE: 1:1



STUDED ANGLED TRACK
6063-T6 ALUMINUM - SCALE: 1:1

NOTE: LOADS AND FASTENING SCHEDULES ARE FOR ATTACHING "F" TRACKS AND STUDED ANGLES TO THE EXISTING STRUCTURE

MAXIMUM DESIGN PRESSURE OF A GROMMET SCREEN FOR ANY LENGTH ATTACHED WITH 1/4" HFH ELCO ULTRACON (PSF)

SCREEN SPANS UP TO	CONC. & FILLED CMU (3500 PSI)					CONC. & FILLED CMU (2500 PSI)					HOLLOW CMU (1800 PSI)					TIMBER (S.G. = .55)				
	SPACING (INCHES)					SPACING (INCHES)					SPACING (INCHES)					SPACING (INCHES)				
	8	7	6	5	4	8	7	6	5	4	8	7	6	5	4	8	7	6	5	4
4'-0"	100	100	100	100	100	100	100	100	100	100	100	100	100	100	100	100	100	100	100	100
4'-6"	100	100	100	100	100	100	100	100	100	100	100	100	100	100	100	100	100	100	100	100
5'-0"	100	100	100	100	100	100	100	100	100	100	100	100	100	100	100	100	100	100	100	100
5'-6"	100	100	100	100	100	100	100	100	100	100	100	100	100	100	100	100	100	100	100	100
6'-0"	100	100	100	100	100	100	100	100	100	100	100	100	100	100	100	100	100	100	100	100
6'-6"	100	100	100	100	100	100	100	100	100	100	99	100	100	100	100	95	100	100	100	100
7'-0"	100	100	100	100	100	100	100	100	100	100	90	100	100	100	100	86	100	100	100	100
7'-6"	100	100	100	100	100	100	100	100	100	100	81	97	100	100	100	78	94	100	100	100
8'-0"	100	100	100	100	100	100	100	100	100	100	74	89	100	100	100	72	85	100	100	100
8'-6"	100	100	100	100	100	100	100	100	100	100	68	81	100	100	100	66	79	97	100	100
9'-0"	100	100	100	100	100	98	100	100	100	100	63	75	93	100	100	61	73	89	100	100
9'-6"	100	100	100	100	100	91	100	100	100	100	58	70	86	100	100	57	67	83	100	100
10'-0"	100	100	100	100	100	85	100	100	100	100	54	65	80	100	100	53	63	77	99	100
10'-6"	96	100	100	100	100	80	95	100	100	100	51	61	75	95	100	50	59	73	92	100
11'-0"	90	100	100	100	100	75	90	100	100	100	48	57	70	90	100	46	55	68	87	100
11'-6"	85	100	100	100	100	71	84	100	100	100	44	53	66	84	100	44	52	64	81	100
12'-0"	81	96	100	100	100	66	80	97	100	100	42	50	62	79	100	41	49	60	77	100
12'-6"	76	91	100	100	100	63	75	92	100	100	40	48	59	75	100	39	46	57	73	98
13'-0"	72	86	100	100	100	60	72	87	100	100	38	45	55	71	96	37	44	54	69	92

MAXIMUM DESIGN PRESSURE OF A GROMMET SCREEN FOR ANY LENGTH ATTACHED WITH 1/4-14 ELCO DRIL-FLEX HWH (PSF)

SCREEN SPANS UP TO	1/8" ALUMINUM (6063-T6)					1/4" ALUMINUM (6063-T6)				
	1/8" STEEL (A36)					1/4" STEEL (A36)				
	SPACING (INCHES)					SPACING (INCHES)				
	8	7	6	5	4	8	7	6	5	4
4'-0"	100	100	100	100	100	100	100	100	100	100
4'-6"	100	100	100	100	100	100	100	100	100	100
5'-0"	100	100	100	100	100	100	100	100	100	100
5'-6"	100	100	100	100	100	100	100	100	100	100
6'-0"	100	100	100	100	100	100	100	100	100	100
6'-6"	100	100	100	100	100	100	100	100	100	100
7'-0"	100	100	100	100	100	100	100	100	100	100
7'-6"	100	100	100	100	100	100	100	100	100	100
8'-0"	100	100	100	100	100	100	100	100	100	100
8'-6"	100	100	100	100	100	100	100	100	100	100
9'-0"	100	100	100	100	100	100	100	100	100	100
9'-6"	95	100	100	100	100	100	100	100	100	100
10'-0"	88	100	100	100	100	100	100	100	100	100
10'-6"	82	99	100	100	100	100	100	100	100	100
11'-0"	77	92	100	100	100	100	100	100	100	100
11'-6"	72	87	100	100	100	100	100	100	100	100
12'-0"	68	82	100	100	100	100	100	100	100	100
12'-6"	64	77	96	100	100	100	100	100	100	100
13'-0"	60	73	90	100	100	100	100	100	100	100

MAXIMUM DESIGN PRESSURE OF A GROMMET SCREEN FOR ANY LENGTH ATTACHED WITH 5/16" HFH ELCO ULTRACON (PSF)

SCREEN SPANS UP TO	CONC. & FILLED CMU (3500 PSI)					CONC. & FILLED CMU (2500 PSI)					HOLLOW CMU (1800 PSI)					TIMBER (S.G. = .55)				
	SPACING (INCHES)					SPACING (INCHES)					SPACING (INCHES)					SPACING (INCHES)				
	8	7	6	5	4	8	7	6	5	4	8	7	6	5	4	8	7	6	5	4
4'-0"	100	100	100	100	100	100	100	100	100	100	100	100	100	100	100	100	100	100	100	100
4'-6"	100	100	100	100	100	100	100	100	100	100	100	100	100	100	100	100	100	100	100	100
5'-0"	100	100	100	100	100	100	100	100	100	100	100	100	100	100	100	100	100	100	100	100
5'-6"	100	100	100	100	100	100	100	100	100	100	100	100	100	100	100	100	100	100	100	100
6'-0"	100	100	100	100	100	100	100	100	100	100	100	100	100	100	100	100	100	100	100	100
6'-6"	100	100	100	100	100	100	100	100	100	100	100	100	100	100	100	100	100	100	100	100
7'-0"	100	100	100	100	100	100	100	100	100	100	100	100	100	100	100	100	100	100	100	100
7'-6"	100	100	100	100	100	100	100	100	100	100	92	100	100	100	100	100	100	100	100	100
8'-0"	100	100	100	100	100	100	100	100	100	100	84	100	100	100	100	100	100	100	100	100
8'-6"	100	100	100	100	100	100	100	100	100	100	78	93	100	100	100	100	100	100	100	100
9'-0"	100	100	100	100	100	100	100	100	100	100	72	86	100	100	100	100	100	100	100	100
9'-6"	100	100	100	100	100	100	100	100	100	100	67	79	97	100	100	100	100	100	100	100
10'-0"	100	100	100	100	100	100	100	100	100	100	62	74	91	100	100	100	100	100	100	100
10'-6"	100	100	100	100	100	100	100	100	100	100	58	69	85	100	100	98	100	100	100	100
11'-0"	100	100	100	100	100	100	100	100	100	100	54	65	80	100	100	92	100	100	100	100
11'-6"	100	100	100	100	100	100	100	100	100	100	51	61	75	95	100	86	100	100	100	100
12'-0"	100	100	100	100	100	98	100	100	100	100	48	57	71	90	100	81	98	100	100	100
12'-6"	100	100	100	100	100	94	100	100	100	100	46	55	67	85	100	77	92	100	100	100
13'-0"	99	100	100	100	100	89	100	100	100	100	43	51	63	81	100	73	87	100	100	100

NOTE: ALL LOADS AND FASTENING SCHEDULES ON SHEET 10 CAN BE USED TO ATTACHING "F" TRACKS AND STUDED ANGLES TO THE EXISTING STRUCTURE

REVISIONS

#	DATE	REVISIONS

STORM SMART INDUSTRIES
6182 IDLEWILD STREET, FORT MYERS, FL 33966
PHONE: 239.936.1000; FAX: 239.278.7850
WWW.STORMSMART.COM OR WWW.STORMCATCHER.COM

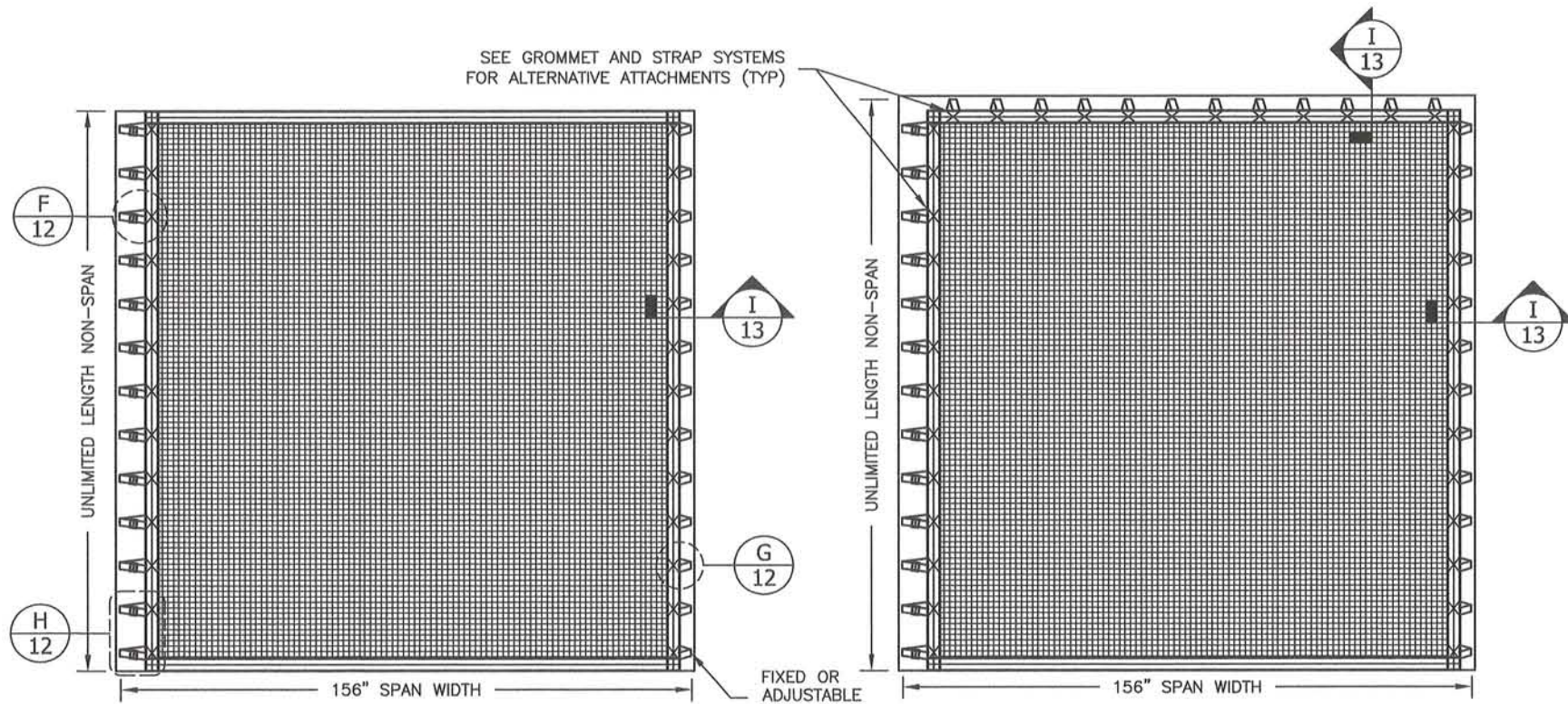
STORM CATCHER WIND ABATEMENT SYSTEM

TKJ Engineering, LLC.
11835 AUTUMN CREEK DRIVE, RIVERVIEW, FL 33569
PH: 813.404.7649; EM: TKJENGINEERING@VERIZON.NET
CERTIFICATE OF AUTHORIZATION NUMBER: 28582

DATE: 11/2/09
DRAWN BY: TKJ
SCALE: N.T.S.
PROJ. #: 09-002.1

TREVOR JOHNSON
FLORIDA P.E. # 65624

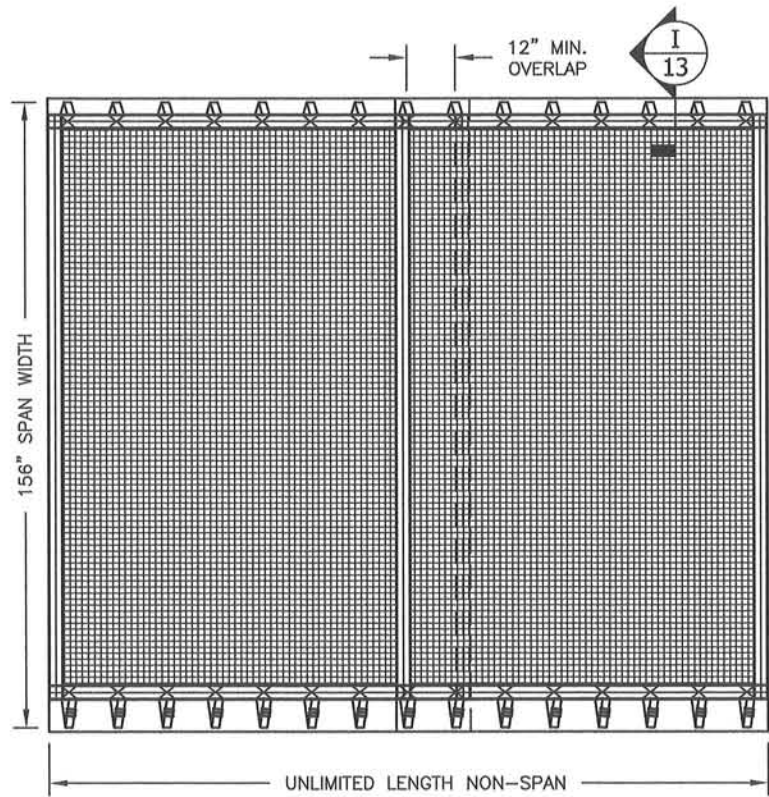
11 OF 16



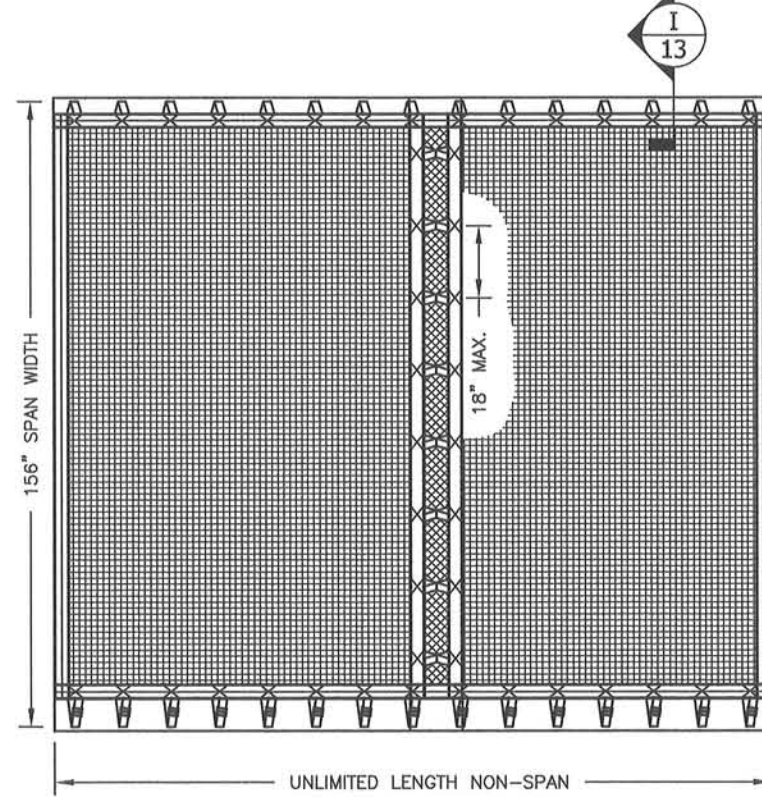
STRAP SCREEN SINGLE PANEL - ELEVATION
TYPICAL 2 SIDED ATTACHMENT - VERTICAL OR HORIZONTAL INSTALLATION - N.T.S.

STRAP SCREEN SINGLE PANEL - ELEVATION
3 OR 4 SIDED ATTACHMENT - VERTICAL OR HORIZONTAL INSTALLATION - SCALE N.T.S.

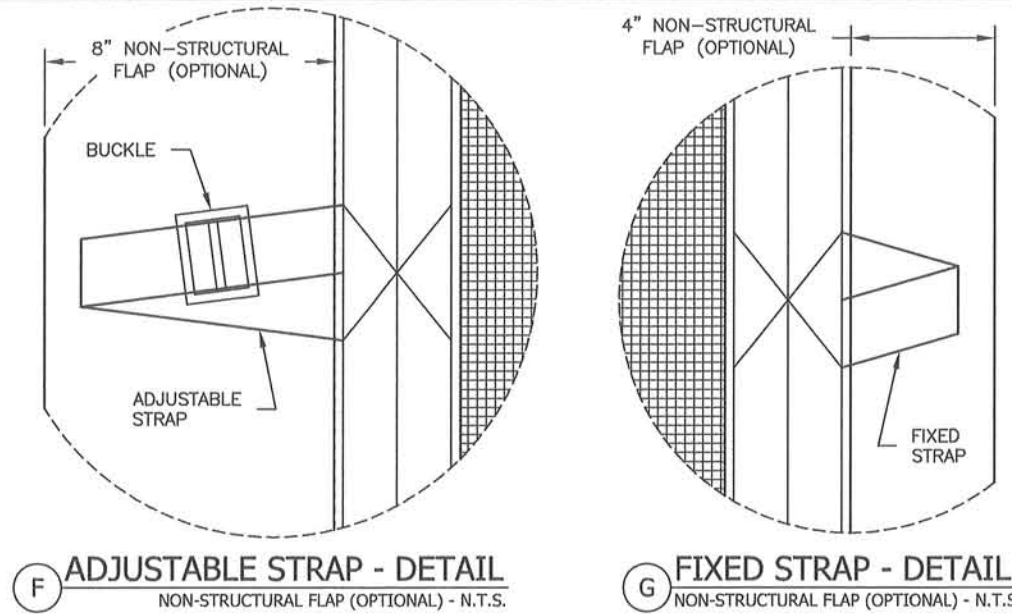
NOTE: FOR 4 SIDED ATTACHMENT THE SPAN IS IN THE SHORT DIMENSION BETWEEN FASTENERS.



STRAP SCREEN MULTIPLE PANEL - ELEVATION
LAPPED SCREEN - VERTICAL OR HORIZONTAL INSTALLATION - N.T.S.

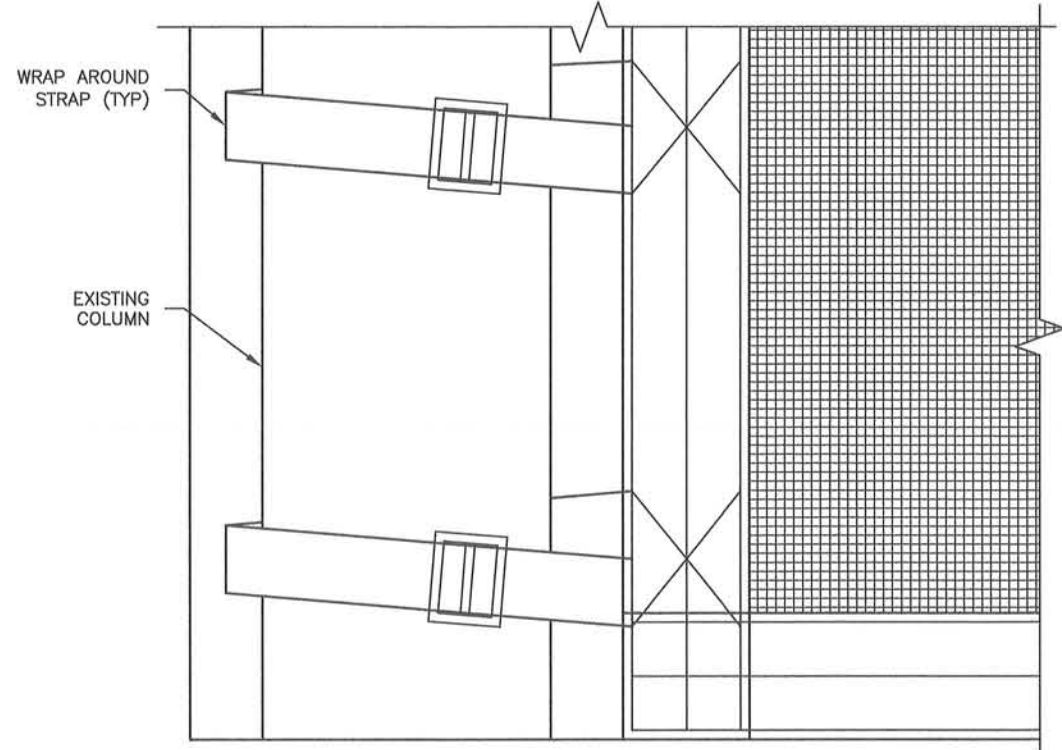


STRAP SCREEN MULTIPLE PANEL - ELEVATION
OPTIONAL COLUMN ATTACHMENT - VERTICAL OR HORIZONTAL INSTALLATION - N.T.S.

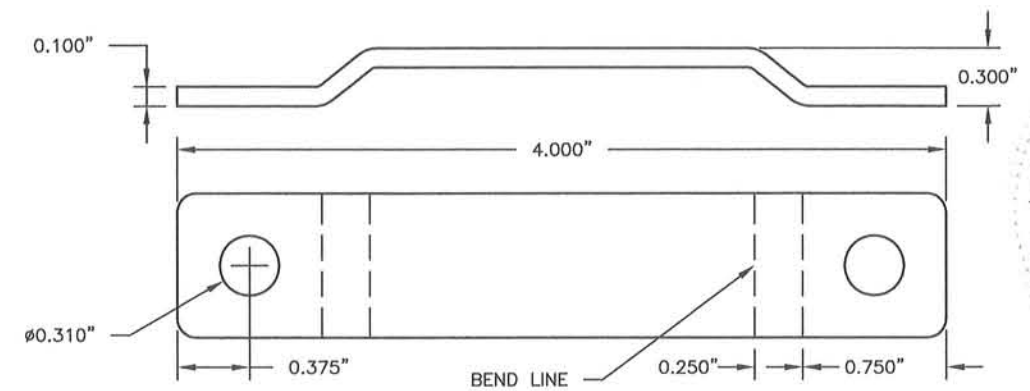


F ADJUSTABLE STRAP - DETAIL
NON-STRUCTURAL FLAP (OPTIONAL) - N.T.S.

G FIXED STRAP - DETAIL
NON-STRUCTURAL FLAP (OPTIONAL) - N.T.S.



H COLUMN MOUNT - DETAIL
COLUMN STRAP ATTACHMENT (OPTIONAL) - N.T.S.



STRAP BRACKET
304 STAINLESS STEEL - SCALE: 1:1

REVISIONS	DATE	#

STORM SMART INDUSTRIES
6182 IDLEWILD STREET, FORT MYERS, FL 33966
PHONE: 239.938.1000; FAX: 239.278.7950
WWW.STORMSMART.COM OR WWW.STORMCATCHER.COM

STORM CATCHER WIND ABATEMENT SYSTEM

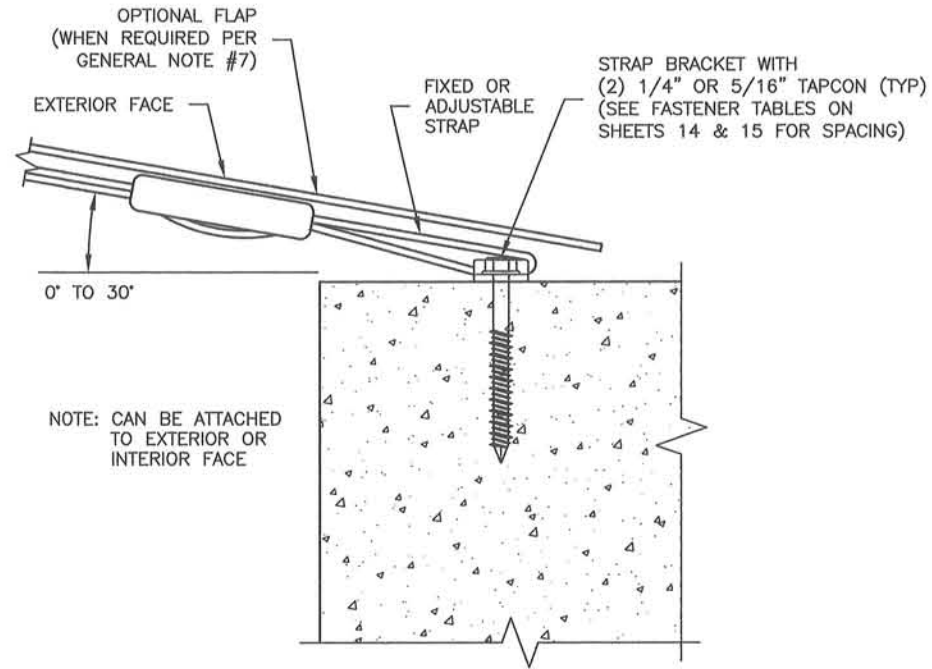
TKJ Engineering, LLC.
11835 AUTUMN CREEK DRIVE, RIVERVIEW, FL 33569
PH: 613-404-7648; EM: TKENGINEERING@VERIZON.NET
CERTIFICATE OF AUTHORIZATION NUMBER: 28552

DATE: 11/2/09
DRAWN BY: TKJ
SCALE: N.T.S.
PROJ. #: 09-002.1

THIS IS TO CERTIFY THAT, TO THE BEST OF MY KNOWLEDGE, THESE PLANS & SPECIFICATIONS ARE IN COMPLIANCE WITH THE BUILDING CODE REQUIREMENTS

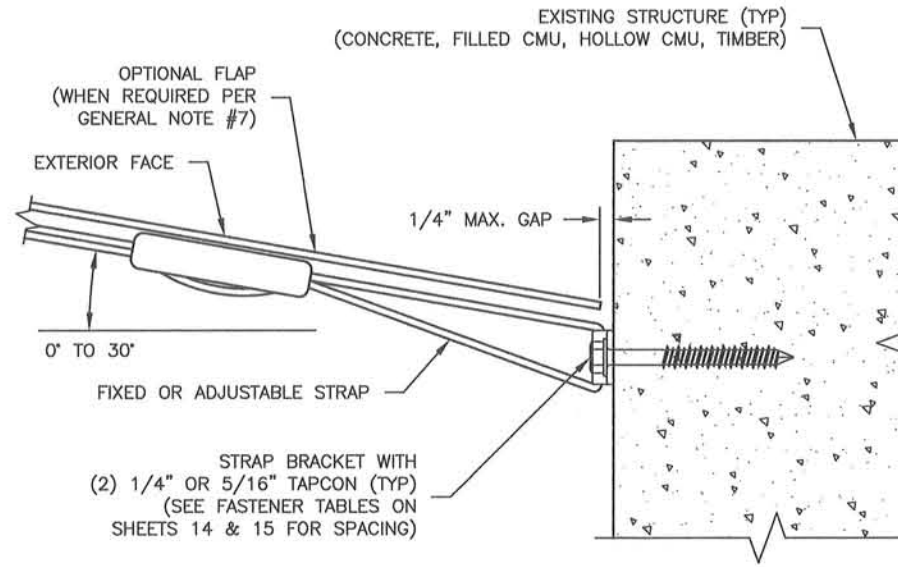
Trevor Johnson
11-2-09
TREVOR JOHNSON
FLORIDA P.E. # 66624

12 OF 16

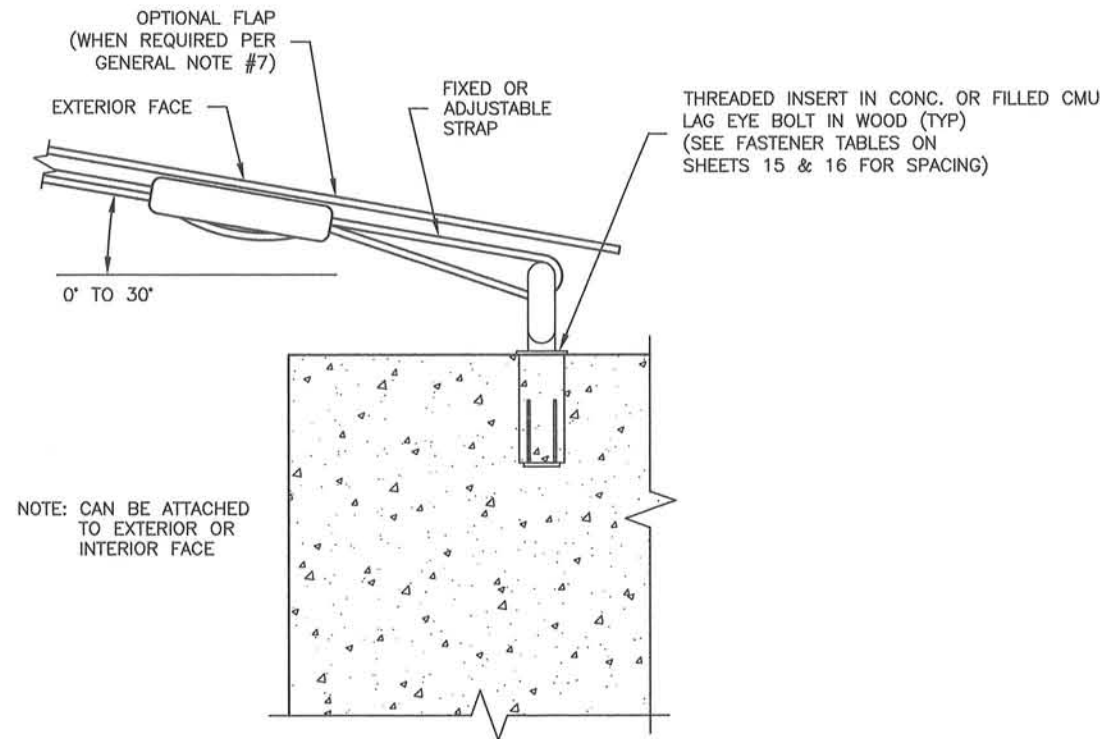


NOTE: CAN BE ATTACHED TO EXTERIOR OR INTERIOR FACE

I OUTSIDE MOUNT - SECTION
STRAP BRACKET INSTALLATION (OPTION 1) - N.T.S.

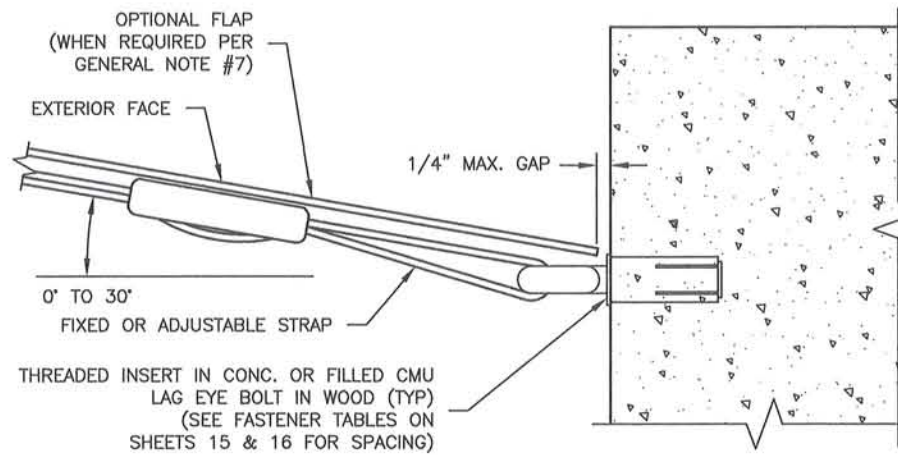


I INSIDE MOUNT - SECTION
STRAP BRACKET INSTALLATION (OPTION 2) - N.T.S.



NOTE: CAN BE ATTACHED TO EXTERIOR OR INTERIOR FACE

I OUTSIDE MOUNT - SECTION
EYE BOLT INSTALLATION (OPTION 3) - N.T.S.



I INSIDE MOUNT - SECTION
EYE BOLT INSTALLATION (OPTION 4) - N.T.S.

REVISIONS	DATE	#

STORM SMART INDUSTRIES
 6182 IDLEWILD STREET, FORT MYERS, FL 33966
 PHONE: 239.938.1000; FAX: 239.276.7950
 WWW.STORMSMART.COM OR WWW.STORMCATCHER.COM

STORM CATCHER WIND ABATEMENT SYSTEM

TKJ Engineering, LLC.
 11835 AUTUMN CREEK DRIVE, RIVERVIEW, FL 33569
 PH.: 813.404.7649; EM: TKJENGINEERING@VERIZON.NET
 CERTIFICATE OF AUTHORIZATION NUMBER: 285852

DATE:	DRAWN BY:	SCALE:	PROJ. #:
11/2/09	TKJ	N.T.S.	09-002.1

TREVOR JOHNSON
 LICENSE
 11-2-09
 TREVOR JOHNSON
 FLORIDA P.E. # 68624

THIS IS TO CERTIFY THAT TO THE BEST OF MY KNOWLEDGE, THESE PLANS & SPECIFICATIONS ARE IN COMPLIANCE WITH THE BUILDING CODE REQUIREMENTS

NOTE: LOADS AND FASTENING SCHEDULES ARE FOR ATTACHING STRAPS TO THE EXISTING STRUCTURE

MAXIMUM DESIGN PRESSURE OF A STRAP SCREEN FOR ANY LENGTH ATTACHED WITH STRAP BRACKETS AND (2) 5/16" ELCO ULTRACONS (PSF)																															
SCREEN SPANS UP TO	CONC. & FILLED CMU (3500 PSI)					CONC. & FILLED CMU (2500 PSI)					HOLLOW CMU (1800 PSI)								TIMBER (S.G. = .55)												
	SPACING (INCHES)					SPACING (INCHES)					SPACING (INCHES)								SPACING (INCHES)												
	18	17	16	15	14	18	17	16	15	14	18	17	16	15	14	13	12	11	10	9	8	18	17	16	15	14	13	12	11	10	9
4'-0"	100	100	100	100	100	100	100	100	100	100	100	100	100	100	100	100	100	100	100	100	100	100	100	100	100	100	100	100	100	100	100
4'-6"	100	100	100	100	100	100	100	100	100	100	100	100	100	100	100	100	100	100	100	100	100	100	100	100	100	100	100	100	100	100	100
5'-0"	100	100	100	100	100	100	100	100	100	100	100	100	100	100	100	100	100	100	100	100	100	100	100	100	100	100	100	100	100	100	100
5'-6"	100	100	100	100	100	100	100	100	100	100	100	100	100	100	97	100	100	100	100	100	100	100	100	100	100	100	100	100	100	100	100
6'-0"	100	100	100	100	100	100	100	100	100	100	100	100	100	100	86	93	100	100	100	100	100	100	100	100	100	100	100	100	100	100	100
6'-6"	100	100	100	100	100	100	100	100	100	100	100	100	100	77	83	90	98	100	100	100	100	100	100	100	100	100	100	100	100	100	100
7'-0"	100	100	100	100	100	100	100	100	100	100	100	100	100	70	75	82	89	97	100	100	100	100	100	100	100	100	100	100	100	100	100
7'-6"	100	100	100	100	100	100	100	100	100	100	100	100	100	64	69	74	80	88	97	100	100	100	100	100	100	100	100	100	100	100	100
8'-0"	100	100	100	100	100	100	100	100	100	100	100	100	100	58	62	68	74	81	89	99	100	100	100	100	100	100	100	100	100	100	100
8'-6"	100	100	100	100	100	100	100	100	100	100	100	100	100	53	58	62	68	74	82	91	100	100	100	100	100	100	100	100	100	100	100
9'-0"	100	100	100	100	100	100	100	100	100	100	100	100	100	49	54	58	62	69	76	84	95	100	100	100	100	100	100	100	100	100	100
9'-6"	100	100	100	100	100	100	100	100	100	100	100	100	100	46	49	54	58	64	70	79	88	100	100	100	100	100	100	100	100	100	100
10'-0"	100	100	100	100	100	100	100	100	100	100	100	100	100	43	46	50	54	60	65	73	82	93	100	100	100	100	100	100	100	100	100
10'-6"	100	100	100	100	100	100	100	100	100	100	100	100	100	40	43	47	51	56	61	68	77	87	100	100	100	100	100	100	100	100	100
11'-0"	100	100	100	100	100	100	100	100	100	100	100	100	100	38	40	44	48	52	58	64	72	82	94	100	100	100	100	100	100	100	100
11'-6"	100	100	100	100	100	100	100	100	100	100	100	100	100	35	38	41	45	49	55	60	68	77	88	100	100	100	100	100	100	100	100
12'-0"	100	100	100	100	100	100	100	100	100	100	100	100	100	33	36	39	42	46	51	57	64	73	83	98	100	100	100	100	100	100	100
12'-6"	100	100	100	100	100	94	100	100	100	100	100	100	100	31	34	36	40	44	48	54	60	69	79	92	100	100	100	100	100	100	100
13'-0"	100	100	100	100	100	89	97	100	100	100	100	100	100	30	32	34	38	42	46	51	57	64	74	87	100	100	100	100	100	100	100

MAXIMUM DESIGN PRESSURE OF A STRAP SCREEN FOR ANY LENGTH ATTACHED WITH STRAP BRACKETS AND (2) 1/4" ELCO ULTRACONS (PSF)																															
SCREEN SPANS UP TO	CONC. & FILLED CMU (3500 PSI)					CONC. & FILLED CMU (2500 PSI)					HOLLOW CMU (1800 PSI)								TIMBER (S.G. = .55)												
	SPACING (INCHES)					SPACING (INCHES)					SPACING (INCHES)								SPACING (INCHES)												
	18	17	16	15	14	18	17	16	15	14	18	17	16	15	14	13	12	11	10	9	8	18	17	16	15	14	13	12	11	10	9
4'-0"	100	100	100	100	100	100	100	100	100	100	100	100	100	100	100	100	100	100	100	100	100	100	100	100	100	100	100	100	100	100	
4'-6"	100	100	100	100	100	100	100	100	100	100	100	100	100	100	100	100	100	100	100	100	100	100	100	100	100	100	100	100	100	100	
5'-0"	100	100	100	100	100	100	100	100	100	100	100	100	100	100	100	100	100	100	100	100	100	100	100	100	100	100	100	100	100	100	
5'-6"	100	100	100	100	100	100	100	100	100	100	100	100	100	100	100	100	100	100	100	100	100	100	100	100	100	100	100	100	100	100	
6'-0"	100	100	100	100	100	100	100	100	100	100	100	100	100	100	100	100	100	100	100	100	100	100	100	100	100	100	100	100	100	100	
6'-6"	100	100	100	100	100	100	100	100	100	100	100	100	100	100	100	100	100	100	100	100	100	100	100	100	100	100	100	100	100	100	
7'-0"	100	100	100	100	100	100	100	100	100	100	100	100	100	100	96	100	100	100	100	100	100	100	100	100	100	100	100	100	100	100	
7'-6"	100	100	100	100	100	100	100	100	100	100	100	100	100	100	88	94	100	100	100	100	100	100	100	100	100	100	100	100	100	100	
8'-0"	96	100	100	100	100	100	100	100	100	100	100	100	100	100	80	86	93	100	100	100	100	100	100	100	100	100	100	100	100	100	
8'-6"	88	96	100	100	100	100	100	100	100	100	100	100	100	100	74	79	86	93	100	100	100	100	100	100	100	100	100	100	100	100	
9'-0"	82	89	96	100	100	100	100	100	100	100	100	100	100	100	68	74	79	86	95	100	100	100	100	100	100	100	100	100	100	100	
9'-6"	77	82	89	97	100	100	100	100	100	100	100	100	100	63	68	74	81	88	97	100	100	100	100	100	100	100	100	100	100	100	
10'-0"	71	77	83	90	99	100	100	100	100	100	100	100	100	59	64	69	75	82	91	100	100	100	100	100	100	100	100	100	100	100	
10'-6"	67	72	78	85	92	100	100	100	100	100	100	100	100	56	60	65	70	77	85	95	100	100	100	100	100	100	100	100	100	100	
11'-0"	63	68	73	80	87	96	100	100	100	100	100	100	100	52	56	61	66	73	80	88	99	100	100	100	100	100	100	100	100	100	
11'-6"	59	64	68	75	82	90	100	100	100	100	100	100	100	49	52	57	62	68	75	83	93	100	100	100	100	100	100	100	100	100	
12'-0"	56	60	65	71	78	86	95	100	100	100	100	100	100	46	50	54	59	64	71	78	88	100	100	100	100	100	100	100	100	100	
12'-6"	53	57	62	67	74	81	89	100	100	100	100	100	100	44	47	51	55	61	67	74	83	94	100	100	100	100	100	100	100	100	
13'-0"	50	54	58	63	69	76	85	95	100	100	100	100	100	42	44	49	53	57	64	71	79	89	100	100	100	100	100	100	100	100	

#	DATE	REVISIONS

STORM SMART INDUSTRIES
 6182 IDLEWILD STREET, FORT MYERS, FL 33966
 PHONE: 239.938.1000; FAX: 239.278.7950
 WWW.STORMSMART.COM OR WWW.STORMCATCHER.COM

STORM CATCHER WIND ABATEMENT SYSTEM

TKG Engineering, LLC.
 11835 AUTUMN CREEK DRIVE, RIVERVIEW, FL 33569
 PH: 613.404.7649; EM: TKENGINEERING@VERIZON.NET
 CERTIFICATE OF AUTHORIZATION NUMBER: 28592

DATE: 11/2/09
 DRAWN BY: TKJ
 SCALE: N.T.S.
 PROJ. #: 09-002.1

THIS IS TO CERTIFY THAT, TO THE BEST OF MY KNOWLEDGE, THESE PLANS & SPECIFICATIONS ARE IN COMPLIANCE WITH THE BUILDING CODE REQUIREMENTS

TREVOR JOHNSON
 11-2-09
 TREVOR JOHNSON
 FLORIDA P.E. # 65624

14 OF 16

